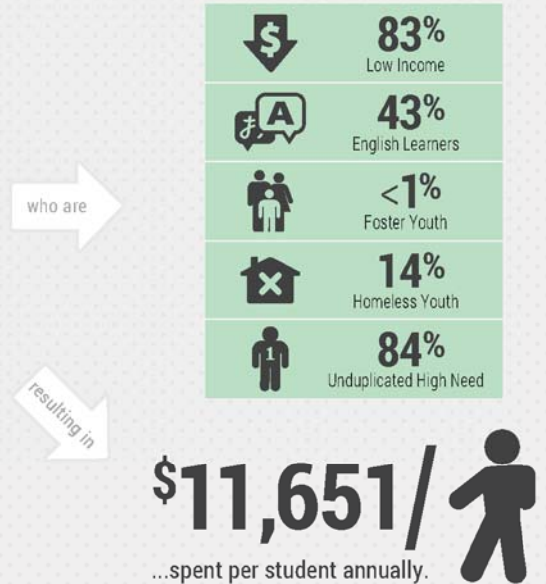
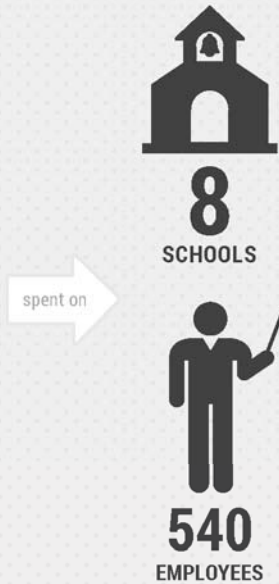
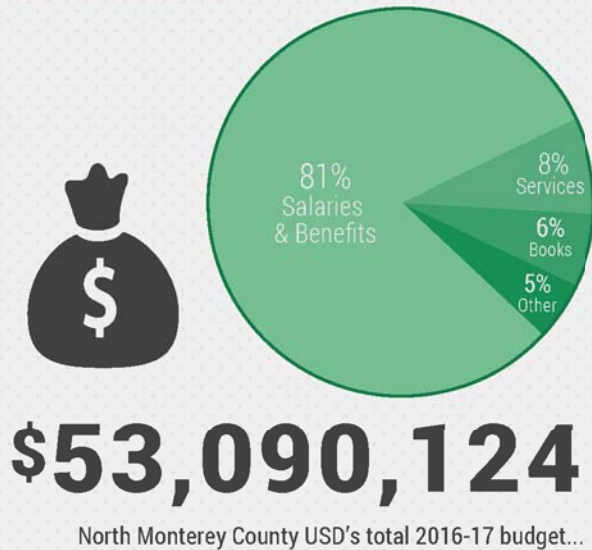


Local Control and Accountability Plan



District Overview



GOAL #1
INVESTING \$1,541,802

CSS Math Achievement

HIGHLIGHTED OUTCOMES & METRICS

	STATE STANDARDS IMPLEMENTATION	90%
	INCREASED MATH ASSESSMENT ACHIEVEMENT RATE	+5.2%
	INCREASED ENGLISH LEARNER MATH ACHIEVEMENT RATE	+7 Points

GOAL #2
INVESTING \$1,430,221

CSS ELA Achievement

HIGHLIGHTED OUTCOMES & METRICS

	INCREASED ELA ASSESSMENT ACHIEVEMENT RATE	+4.4%
	INCREASED RFEP & ENGLISH LEARNERS PROGRESS	+3.2% RFEP +2.5% EL Progress
	INCREASED PROFESSIONAL DEVELOPMENT DAYS	+3 Days

GOAL #3
INVESTING \$1,825,850

21st Century Learning

HIGHLIGHTED OUTCOMES & METRICS

	INCREASED A-G COURSE COMPLETION	+5.8% All +14.7% EL
	INCREASED COLLEGE READINESS	+12.9% ELA +12.2% Math
	INCREASED CTE & AP TEST PARTICIPATION	↑726 CTE +28 AP

Local Control and Accountability Plan



GOAL #4 INVESTING \$2,297,780



Increase Student Engagement

HIGHLIGHTED OUTCOMES & METRICS



INCREASED DISTRICT WIDE ATTENDANCE

+23%



INCREASED GRADUATION RATE

+2.6%



INCREASED GPAs TO 2.5+

↑ 8% All
↑ 2.8% EL



DECREASED D & F GRADES

↓ 10.83% All
↓ 11.41% EL



DECREASED SUSPENSION RATE

-4.7%

GOAL #5 INVESTING \$2,938,838



Responsive Parents, Teachers & Staff

HIGHLIGHTED OUTCOMES & METRICS



INCREASED NUMBER OF ENGAGED PARENTS

↑ 3,135



INCREASED STUDENTS' CONNECTEDNESS TO SCHOOL

↑ 96% Elementary
↑ 89% Middle School
↑ 87% High School



NEW LIBRARY MEDIA CENTER WITH EXTENDED HOURS

+ Hours



INCREASED MUSIC TO ELEMENTARY & MIDDLE SCHOOLS



GOAL #6 INVESTING \$988,647



Safe & Sufficient Facilities

HIGHLIGHTED OUTCOMES & METRICS



INCREASED STUDENTS FEELING SAFE

↑ 78% Elementary
↑ 61% Middle School
↑ 51% High School



INCREASED FACILITY DEVELOPMENT / IMPROVEMENT



INCREASED TEACHER & STAFF FTE



ADDED SCHOOL RESOURCE OFFICER



INCREASED SCHOOL SUPERVISORS

