

# Local Control & Accountability Plan Summary



## SCHOOL STORY



**202** TK-12 STUDENTS

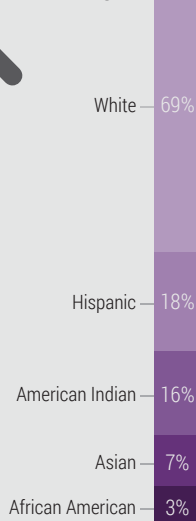


**1** SCHOOL



**14** EMPLOYEES

### STUDENT ETHNICITY



### SUBGROUPS



### Safe, secure, & individualized learning environment

PVCS students exhibit strong academic, social & emotional growth



### All time stakeholder involvement high

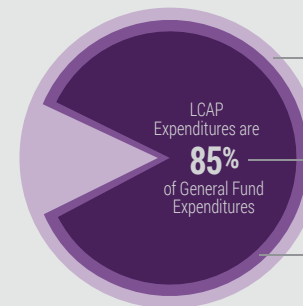
100% of parents meet with teachers 4 times per year

### School Mission

Help all students reach their potential



## BUDGET



General Fund Expenditures:  
**\$2,166,624**

LCAP Expenditures:  
**\$1,842,665**

LCFF Revenues:  
**\$1,897,466**

(Totals Budgeted for 2017-18 LCAP Year)

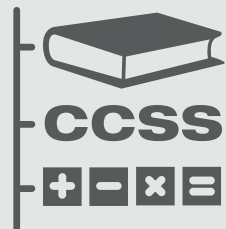
### Additional Expenditures Not Specified in the LCAP:

- Reservation for economic uncertainties

**\$323,959**

## LCAP HIGHLIGHTS

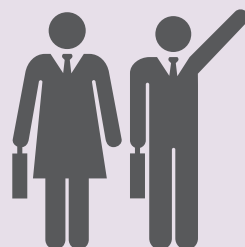
### ✓ Maintain Common Core Aligned Curriculum



GOAL #1

#### Highlighted Actions & Expenditures

1.1 - Credit recovery, tutoring & counseling	\$184,387
1.2 - Offer high quality online common core aligned curriculum	\$76,175
1.3 - Ensure highly qualified staff	\$1,203,000



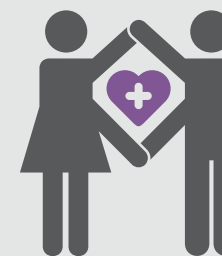
### ✓ Increase Career & Vocational Readiness

GOAL #2

#### Highlighted Actions & Expenditures

2.1 - Review implemented Career/ Vocational/ Technical/ College programs	\$5,000
2.2 - Provide available course, career selection & college option information	\$3,000

### ↑ Improve School Climate



GOAL #3

#### Highlighted Outcomes & Metrics

MAINTAIN FACILITIES IN GOOD REPAIR	=
DECREASE CHRONIC ABSENTEEISM	↓6%



# Local Control & Accountability Plan Summary

2017-18

Pacific View Charter School

Page 2 of 2



### GREATEST PROGRESS

	<b>Decreased suspension rates</b>	Status: High ↓ Change: Declined significantly
<b>Increase in positive school climate</b>		Indicator:  Stakeholder Feedback
	<b>Increased graduation rate</b>	Status: Low ↑ Change: Increased significantly

**Planned Actions to Maintain Progress:**

- Transparent & consistent stakeholder communication
- Student-centered technology online curriculum & individualized programs
- Continue small class sizes (5-8 students)

### GREATEST NEEDS

	<b>Improve ELA assessment scores</b>	Status: Low ↓
	<b>Improve math assessment scores</b>	Status: Very Low ↓

**Planned Actions to Address Needs:**

- New English-Language Arts program
- Student incentives to increase basic skills
- Practice testing on CAASPP website

### PERFORMANCE GAPS

Subgroup in Need:	State Indicators:  1. Chronic Absenteeism	 2. Suspension Rate  3. English Learner  4. Graduation Rate	 5. College/Career Readiness  6. ELA Assessment  7. Math Assessment
<b>Socioeconomically Disadvantaged</b>			
<b>Students with Disabilities</b>			
<b>Hispanic</b>			
<b>White</b>			

**Planned Actions to Address Performance Gaps:**

- Continue to use Common Core Standards Based ELA & Math curricular materials
- Language arts & math tutors available daily for small group or 1-on-1 support
- 2 Instructional Aides provide support during daily study hall

### INCREASED OR IMPROVED SERVICES

	<b>Increase local organization donations</b>	
for  EL  LI  FY		
	<b>Remodel/upgrade kitchen to serve lunches</b>	
for  Low Income		
	<b>Instructional aides &amp; reading recovery teacher</b>	
for  EL  LI  FY		