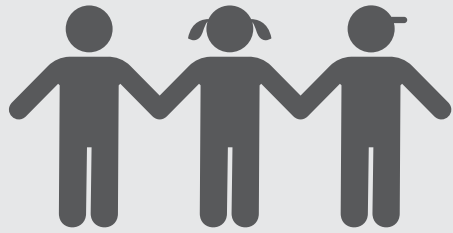


# Local Control & Accountability Plan Summary

## SCHOOL STORY



**50** 7th-12th STUDENTS



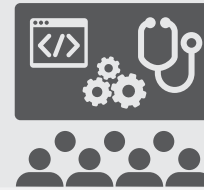
SCHOOLS



EMPLOYEES



**CTE Pathways**  
Programming & Robotics

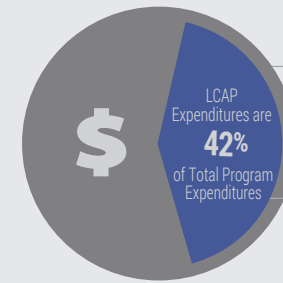


**Low Teacher Student Ratio**  
Provides differentiated, meaningful & rigorous instruction to all students

**Social Emotional Support**  
Counseling & interventions provided for students in need



## BUDGET



Total Program Expenditures:  
**\$1,893,091**

LCAP Expenditures:  
**\$793,091**

**Base Grant Expenditures Not Specified in the LCAP:**

- Base instructional program including: classroom teachers, supplies, technology, facilities, clerical & administrative support

**\$1,100,000**

## LCAP HIGHLIGHTS

GOAL #1



**Optimal Learning Environment**

GOAL #2



**Engage Students**

GOAL #3



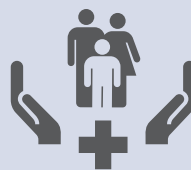
**Develop District Leadership Team**

GOAL #4



**Provide Supplemental Support**

GOAL #5



**Implement Foster Youth Services Program**

GOAL #6



**Implement Expelled Youth Services Program**



# Local Control & Accountability Plan Summary

## GREATEST PROGRESS

Increased academic motivation



Indicator:  
 CHKS



PBIS District Capacity Assessment

Indicator:  
 Local Metric: 90%

Increased language level 4 & 5 achievement



Indicator:  
 CEDLT: +22.5%

### Planned Actions to Maintain Progress:

- 1.2 - Provide SmartBoard, Universal Design for Learning, & PBIS training
- 2.1 - Implement Individual Learning Plans
- 4.4 - Specific English Language Development Professional Development

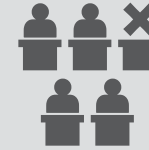
## GREATEST NEEDS



Improve academic achievement

Indicator:  
 Local Metric

Reduce chronic absenteeism



Indicator:  
 Local Metric



Continue focus on Social-Emotional learning

Indicator:  
 Local Metric

### Planned Actions to Address Needs & Performance Gaps:

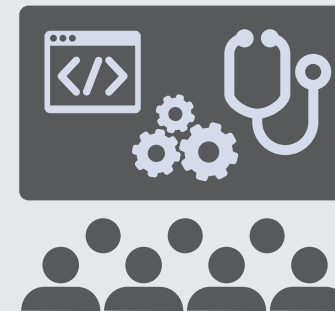
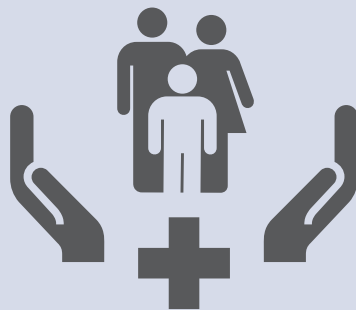
- 1.1 - Provide PD & instructional coaching (PLCs, State Adopted Standards)
- 2.3 - School Attendance Review Board & Bilingual Liaison
- 2.4 - Student resiliency (counseling, social work & administer CHKS)
- 2.6 - CTE pathways & exploration classes
- 4.1 - Maintain support staff (Teacher Assistant to support small group instruction)
- 4.6 - Additional summer instructional days

## INCREASED OR IMPROVED SERVICES

Implement Foster Focus for



Foster Youth



CTE Course Access for



EL LI FY

