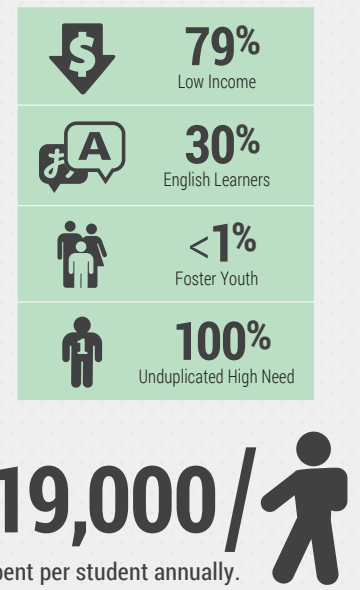
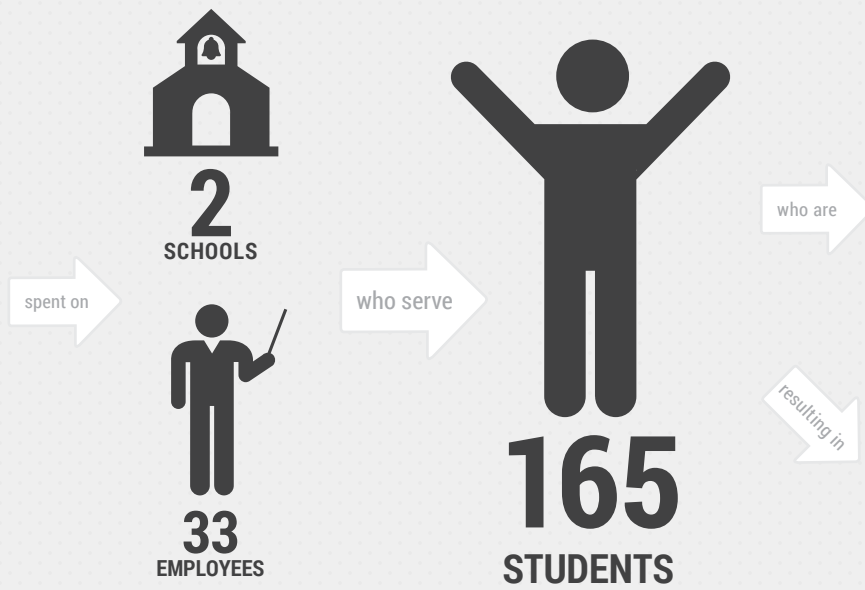
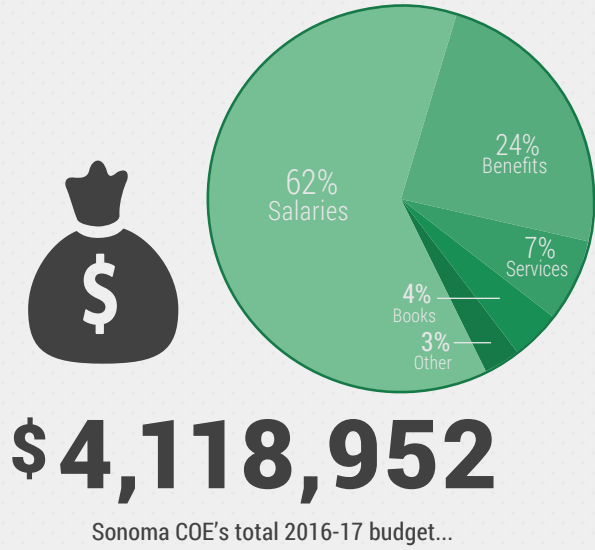


Local Control and Accountability Plan

Sonoma COE
2016-17 Highlights

District Overview



GOAL #1 INVESTING \$2,820,284

CCSS ✓
CCSS grade-level achievement

HIGHLIGHTED OUTCOMES & METRICS		
	INCREASE SBAC ELA & MATH PROFICIENCY SCORES	+10%
	INCREASE SMI SCORES	+10%
	INCREASE 12TH GRADE SRI SCORES ABOVE 1300	+10%
	MAINTAIN APPROPRIATE CREDENTIALLED & HIGHLY QUALIFIED TEACHERS	=100%
	TEACHER INPUT IN CCSS CURRICULUM	✓

HIGHLIGHTED ACTIONS, EXPENDITURES & TARGETS		
1.1 - Highly qualified teachers & staff	\$2,743,448	All Students
1.2 - Instructional coach to support teachers	\$10,780	
1.3 - English & Math intervention teachers, instructional materials & tutoring	see action 1.1	
1.4 - Professional development	\$10,424	
1.5 - Provide Resource Specialists	see action 1.1	SWD
1.6 - Teacher release time to collaborate in CCSS instruction	see action 1.1	
1.7 - Purchase CCSS-aligned materials (explore GED test vendor)	\$50,000	
1.8 - New technology with maintenance & support (computers, tablets, carts to satisfy 2:1 ratio)	\$5,632	
1.9 - Teacher time for reviewing & revising assessments	see action 1.1	

GOAL #2 INVESTING \$164,407

Engaged & connected students

HIGHLIGHTED OUTCOMES & METRICS		
	INCREASE COMMUNITY SCHOOL SEAT TIME PROGRAM ATTENDANCE	+5%
	DECREASE COMMUNITY SCHOOL CHRONIC ABSENTEEISM RATE	-10%

HIGHLIGHTED ACTIONS, EXPENDITURES & TARGETS		
2.1 - Provide behavior specialist services & incentives	see action 1.1	
2.2 - Career Education Coordinator position & enrichment activities	see action 1.1	All Students
2.3 - Expand CTE program	\$27,457	

GOAL #3 INVESTING \$98,506

Safe & secure school environment

HIGHLIGHTED OUTCOMES & METRICS		
	DECREASE COMMUNITY SCHOOL SUSPENSION RATES	-5%
	INCREASE COMMUNITY SCHOOL HIGH LEVELS OF CONNECTEDNESS	+10% on CHKS

HIGHLIGHTED ACTIONS, EXPENDITURES & TARGETS		
3.1 - Continue collaboration with community partners (explore expansion)	\$30,000	All Students
3.2 - Expand events that promote healthy adult & student relationships	see action 1.1	All Students

GOAL #4 INVESTING see Goal #1

Focused aligned ELD instruction

HIGHLIGHTED OUTCOMES & METRICS		
	INCREASE STUDENTS MEETING CELDT CRITERION	+10%
	INCREASE ELD STUDENT RECLASSIFICATION	+10%

HIGHLIGHTED ACTIONS, EXPENDITURES & TARGETS		
4.1 - Purchase ELD CCSS aligned materials	see action 1.7	EL
4.2 - Monitoring & reclassification system for ELs	see action 1.1	
4.3 - Provide comprehensive ELD services	see action 1.1	
4.4 - Support CELDT administration & PD	see 1.1 & 1.4	RFP

GOAL #5 INVESTING \$52,363

Encourage parent involvement

HIGHLIGHTED OUTCOMES & METRICS		
	PARENTS SAY THEY ARE A PARTNER IN THEIR CHILD'S EDUCATION	+2%
	INCREASE PARENTS AT COMMUNITY SCHOOL & PROBATION CAMP ILP CONFERENCE	+10%

HIGHLIGHTED ACTIONS, EXPENDITURES & TARGETS		
5.1 - Support staff & bilingual parent outreach	\$52,363	All Students
5.2 - Bilingual staff to translate all materials & school communications	see action 1.1	
5.3 - Translation services for parent meetings	see action 1.1	

GOAL #6 INVESTING \$0

Planning & opportunities for expelled youth

HIGHLIGHTED OUTCOMES & METRICS		
	EDUCATION SERVICES FOR EXPELLED STUDENTS	100%

HIGHLIGHTED ACTIONS, EXPENDITURES & TARGETS		
6.1 - Monitor 922 plan implementation	N/C	

GOAL #7 INVESTING \$53,146

Ensure quality services for FY

HIGHLIGHTED OUTCOMES & METRICS		
	INCREASED FY GRADUATION RATES	+1%
	FY STUDENT RECORDS ARE PROCESSED WITHIN 48 HRS	✓

HIGHLIGHTED ACTIONS, EXPENDITURES & TARGETS		
7.1 - Continue FYS Coordinator, tutoring & supplies	\$53,146	