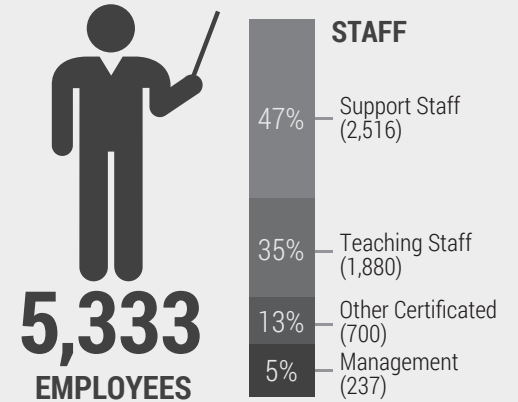
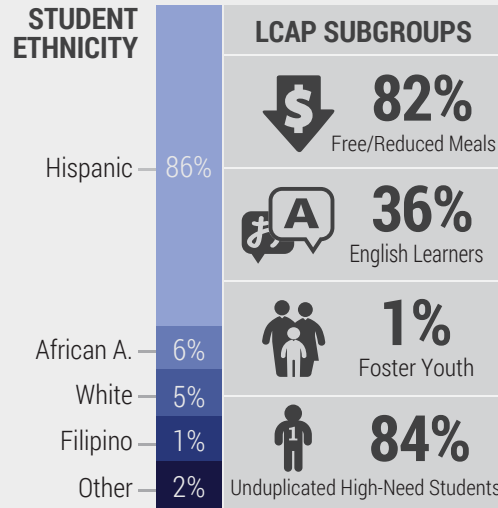




# Local Control and Accountability Plan

## District Overview

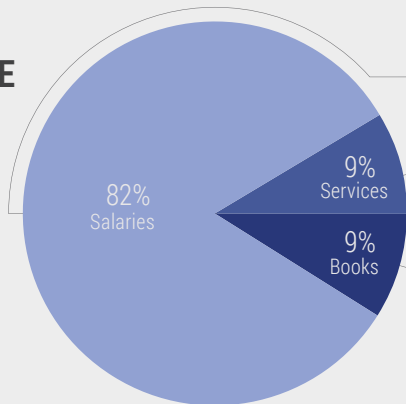


High School:	5	E/H Combo:	2
Middle:	7	Adult:	1
Elementary:	29	Ungraded:	3
Preschool Programs:	30	Charter:	0

### ANNUAL REVENUE



**\$358,441,641**



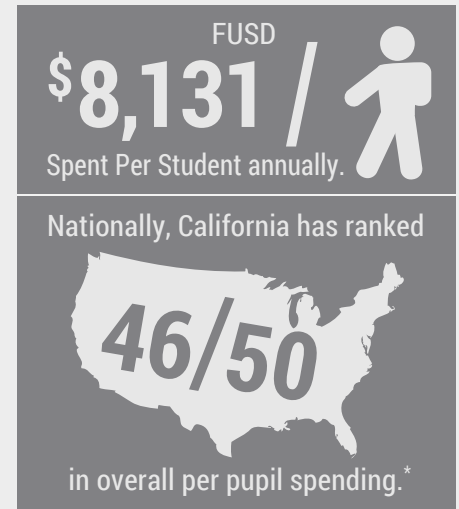
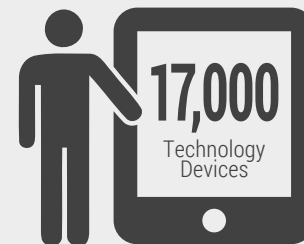
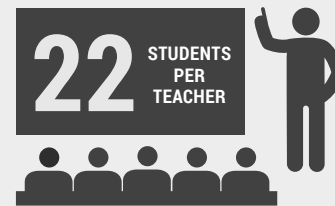
Salaries / Benefits:  
\$291,304,581 (82%)

Services / Operations:  
\$31,023,577 (9%)

Books / Supplies:  
\$30,465,178 (9%)

Capital Outlay / Other Outgo:  
\$-853,228

Total General Fund  
**EXPENDITURES:**  
**\$351,940,108** (100%)



Fontana Unified School District, 9680 Citrus Ave., Fontana, CA 92335-5571; Phone: (909) 357-5600; Website: [www.fusd.net](http://www.fusd.net); CDS# 3667710.

# 1. Stakeholder Engagement

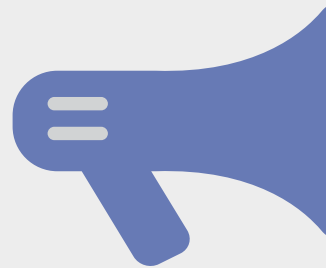


**Groups include:**  
Parents, Students, Classified & Certificated Staff, Administration, Trustees, DELAC, DAC, SSCs, PAC, Faith Based Groups, Chamber of Commerce, Rotary, & Kiwanis.



### Checklist of Items Shared:

- District Profile Data
- State Education Priorities
- LCAP & LCFF Overview
- School Site Plans



FUSD has informed, consulted, and involved school stakeholders in the process of creating the LCAP as summarized above. Communications to stakeholders includes:



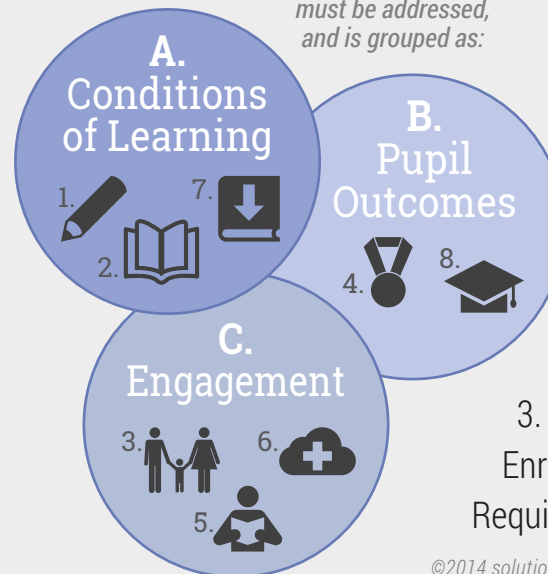
Website, flyers, automated phone calls, announcements, meetings, newspaper coverage and press releases.

## State & Local Priorities



### THE 8 STATE EDUCATION PRIORITIES

1. Basic Services
2. Academic Standards
3. Parent Involvement
4. Student Achievement
5. Student Engagement
6. School Climate
7. Course Access
8. Other Outcomes



Each State Priority must be addressed, and is grouped as:



Stakeholder input is aligned with California's Education Priorities...

### & D. TOP LOCAL PRIORITIES

1. Basic Services
2. Implementation of CCSS
3. Course Access / Enrollment in All Required Areas of Study



... and results in Annual Goals...

# 2. Goals and Progress

METRICS / OUTCOMES 2014-15

Basic Services (State Priority #1)

**GOAL #1**

**100%** General Ed  
**90%** Hard to Fill

**APPROPRIATELY ASSIGNED / CREDENTIALLED TEACHERS**

GROUPS SERVED - All Students    SITES SERVED - All Schools

METRICS / OUTCOMES 2014-15

Basic Services (State Priority #1)

**GOAL #2**

**100%** Grades 6-8

**CCSS-ALIGNED TEXTBOOKS & INSTRUCTIONAL MATERIALS**

GROUPS SERVED - All Students    SITES SERVED - All Schools

METRICS / OUTCOMES 2014-15

4. Student Achievement

8. Other Outcomes

**GOAL #3**

**+2.5%**

**INTERVENTIONS IN MATH & ENGLISH LANGUAGE ARTS**

GROUPS SERVED - All Students    SITES SERVED - All Schools

METRICS / OUTCOMES 2014-15

Basic Services (State Priority #1)

**GOAL #4**

**CLASSROOMS REPAIRED & READY FOR 21<sup>ST</sup> CENTURY LEARNING**

GROUPS SERVED - All Students    SITES SERVED - All Schools

METRICS / OUTCOMES 2014-15

Academic Standards (State Priority #2)

**GOAL #5**

**90%** Teachers > 6 hours PD

**TEACHING & ASSESSMENTS ALIGNED TO CCSS**

GROUPS SERVED - All Students    SITES SERVED - All Schools

METRICS / OUTCOMES 2014-15

Academic Standards (State Priority #2)

**GOAL #6**

**100%** Schools have ILTs

**POWERFUL CLASSROOM INSTRUCTION USING ILTs**

GROUPS SERVED - All Students    SITES SERVED - All Schools

METRICS / OUTCOMES 2014-15

Course Access (State Priority #7)

**GOAL #7**

**100%** 9th Graders

**STUDENTS HAVE COLLEGE / CAREER PLAN**

GROUPS SERVED - All Students    SITES SERVED - All Schools

METRICS / OUTCOMES 2014-15

7. Course Access

8. Other Outcomes

**GOAL #8**

**+5%** 9th Graders

**INCREASE ENROLLMENT IN UC / CSU-REQUIRED COURSES**

GROUPS SERVED - All Students    SITES SERVED - High Schools

METRICS / OUTCOMES 2014-15

Course Access (State Priority #7)

**GOAL #9**

**+2.5%** >= 1 AP Course

**INCREASE AP COURSE ENROLLMENT**

GROUPS SERVED - All Students    SITES SERVED - High Schools

## 2. Goals and Progress (Continued)

METRICS / OUTCOMES 2014-15

Course Access (State Priority #7)

**GOAL #10**

**INCREASE CAREER TECHNICAL EDUCATION PATHWAYS**

GROUPS SERVED SITES SERVED

METRICS / OUTCOMES 2014-15

Course Access (State Priority #7)

**GOAL #11**

**INCREASE INTERNATIONAL BACCALAUREATE COURSES**

GROUPS SERVED SITES SERVED

METRICS / OUTCOMES 2014-15

4. Student Achievement

8. Other Outcomes

**GOAL #12**

**INCREASE ELA & MATH PROFICIENCY**

GROUPS SERVED SITES SERVED

METRICS / OUTCOMES 2014-15

Student Achievement (State Priority #4)

**GOAL #13**

**INCREASE AP EXAM PARTICIPATION**

75%

GROUPS SERVED SITES SERVED

METRICS / OUTCOMES 2014-15

Student Achievement (State Priority #4)

**GOAL #14**

**INCREASE AP EXAM SCORES**

65%  
Score 3+

GROUPS SERVED - All Students SITES SERVED - High Schools

METRICS / OUTCOMES 2014-15

7. Course Access

5. Student Engagement

**GOAL #15**

**INCREASE STUDENTS GRADUATING WITH COLLEGE CREDITS**

+2.5%

GROUPS SERVED - All Students SITES SERVED - High Schools

METRICS / OUTCOMES 2014-15

Student Achievement (State Priority #4)

**GOAL #16**

**INCREASE CELDT PROFICIENCY 1 PROGRESS LEVEL**

+2%

GROUPS SERVED - EL SITES SERVED - All Schools

METRICS / OUTCOMES 2014-15

Student Achievement (State Priority #4)

**GOAL #17**

**INCREASE EL RECLASSIFICATION RATE**

+2%

GROUPS SERVED - EL SITES SERVED - All Schools

METRICS / OUTCOMES 2014-15

Student Achievement (State Priority #4)

**GOAL #18**

**NORM-REFERENCED AVERAGE GROWTH ON ACT**

45%

GROUPS SERVED - EL SITES SERVED - High Schools

METRICS / OUTCOMES 2014-15

Student Achievement (State Priority #4)

**GOAL #19**

**INCREASE CAHSEE MATH & ELA PASS RATES**

80%  
+2%  
Subgroups

GROUPS SERVED - All Students SITES SERVED - High Schools

METRICS / OUTCOMES 2014-15

7. Course Access

8. Other Outcomes

GOAL #20

>15%

HIGHER FOREIGN LANGUAGE & ARTS ENROLLMENT

GROUPS SERVED - All Students SITES SERVED - All Schools

METRICS / OUTCOMES 2014-15

Parent Involvement (State Priority #3)

GOAL #21

90%

INCREASE STAKEHOLDER INPUT LEVELS

GROUPS SERVED - All Students SITES SERVED - All Schools

METRICS / OUTCOMES 2014-15

Parent Involvement (State Priority #3)

GOAL #22

92%  
in English & Spanish

MORE BI-LINGUAL STAKEHOLDER COMMUNICATIONS

GROUPS SERVED - All Students SITES SERVED - All Schools

METRICS / OUTCOMES 2014-15

Parent Involvement (State Priority #3)

GOAL #23

90%

GREATER PARENT ACCESS TO ACADEMIC INITIATIVES

GROUPS SERVED - All Students SITES SERVED - All Schools

METRICS / OUTCOMES 2014-15

7. Course Access

5. Student Engagement

GOAL #24

+1  
Business or College partnership

ENHANCE LOCAL COLLEGE / CAREER PARTNERSHIPS

GROUPS SERVED - All Students SITES SERVED - All Schools

METRICS / OUTCOMES 2014-15

Student Engagement (State Priority #5)

GOAL #25

MAINTAIN ATTENDANCE ABOVE STATE AVERAGE

GROUPS SERVED - All Students SITES SERVED - All Schools

METRICS / OUTCOMES 2014-15

Student Engagement (State Priority #5)

GOAL #26

>83%  
+2%  
Subgroups annually

INCREASE GRADUATION RATES

GROUPS SERVED - All Students SITES SERVED - All Schools

METRICS / OUTCOMES 2014-15

5. Student Engagement

6. School Climate

GOAL #27

-10%  
-15%  
Target groups

DECREASE STUDENT SUSPENSIONS

GROUPS SERVED - All Students SITES SERVED - High Schools

METRICS / OUTCOMES 2014-15

School Climate (State Priority #6)

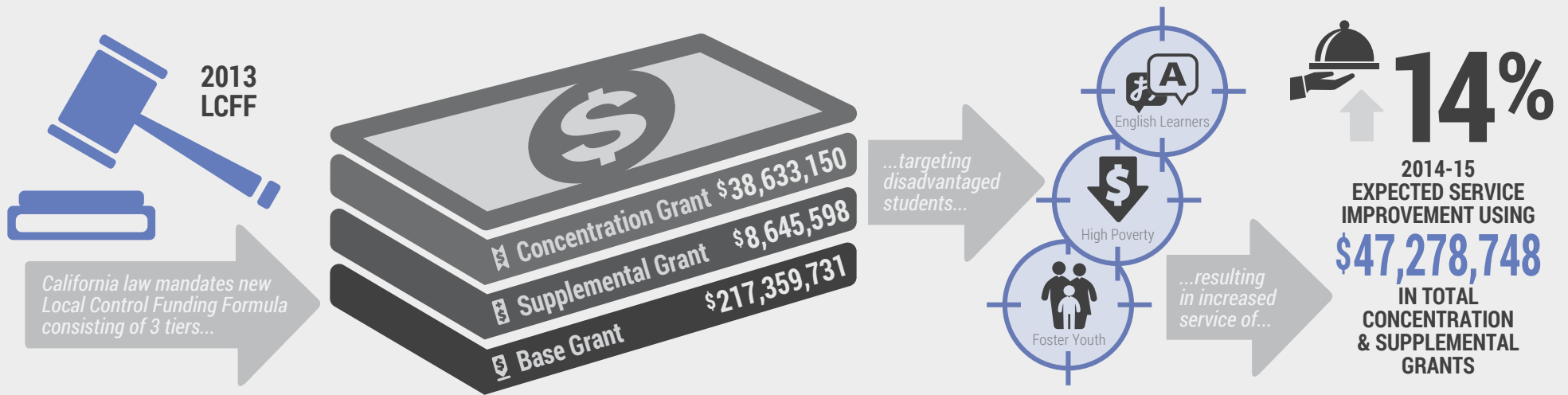
GOAL #28

+4  
Safety Officers

EXPAND POSITIVE BEHAVIOR SUPPORTS

GROUPS SERVED - All Students SITES SERVED - High Schools

### 3. Actions, Services & Expenditures



**Abbreviations:** AP (Advanced Placement), CAHSEE (California High School Exit Examination), CCSS (Common Core State Standards), CDS (County/District/School code), CELDT (California English Language Development Test), CSU (California State University), DAC (District Advisory Council), DELAC (District English Learner Advisory Council), EL (English Learner), ELA (English-Language Arts), ES (Elementary School), FTE (full-time equivalent), FUSD (Fontana Unified School District), HS (High School), ILT (Instructional Leadership Team), IST (Instructional Support Team), LCAP (Local Control Accountability Plan), LCFF (Local Control Funding Formula), MAP (Measures of Academic Progress), MS (Middle School), PAC (Preschool Advisory Committee), PBIS (Positive Behavioral Interventions and Supports), PD (Professional Development), PK (Pre-Kindergarten), PSAT (Preliminary Scholastic Achievement Test), SELPA (Special Education Local Plan Area), SSC (School Site Council), TOA (Teachers-on-Assignment), UC (University of California), VAPA (Visual and Performing Arts).

*This infographic provides a high-level summary only.  
For more detailed information on the Fontana USD LCAP and LCFF, please visit  
<http://www.fusd.net/LCAP/Updates.stm>.  
©2014 solutions@goboinfographics.com*