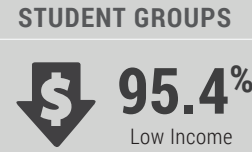
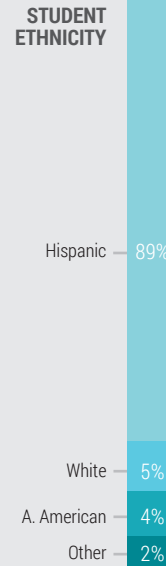
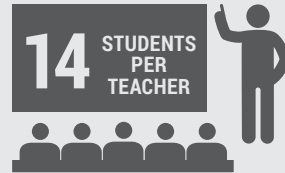
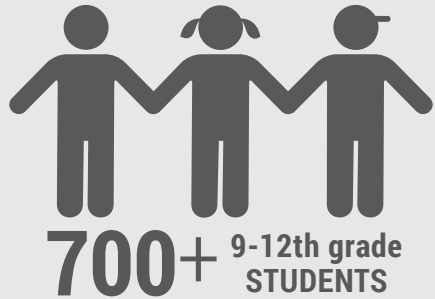


# Learning Continuity & Attendance Plan Summary

2020-21  
Workforce Academy  
Page 1 of 2



## WORKFORCE ACADEMY



### School Vision

All Students deserve an engaging & relevant learning environment, designed by skilled educators & supported by an involved school & local community



### School Philosophy

Given the opportunity, many who by virtue of previous choice or circumstance were off course, will now choose to realign their trajectory, complete their education, & acquire the necessary preparation for the competitive world

### School Mission

Recover, retain, serve & graduate high-risk, out-of-school or credit-deficient high school-age youth



## LEARNING CONTINUITY

### Distance Learning Model

Workforce Academy will begin the 2020-21 school year using a Distance Learning Model.

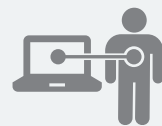
**Ensuring Learning Continuity** will be a major point of focus.



*Some at risk students may return to campus to access distance learning labs, receive targeted supports & limited in-person instruction in small dedicated cohorts*



### Ensure Access for All Students



**480**  
Chromebooks provided



**98**  
Hotspots available



### Keep Students Engaged



**Home check-ins**  
for disengaged students



**Daily live interactions**



### Maintain Quality Education



**100%** of teachers utilizing Canvas LMS



**CTE Courses**  
maintained & ROC/CTEC enrollment stable



**Webcams**  
provided for teachers



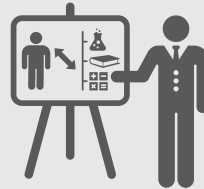


## ADDRESSING PUPIL LEARNING LOSS



*Diagnosing and addressing pupil learning loss will be a primary focus in 2020-21 following school closures in Spring 2020.*

### LEARNING LOSS STRATEGIES



- **Online tutoring** will be available in a variety of subjects.
- **Truancy prevention supports** will be provided to keep students engaged.
- **Literacy Committee** will promote, implement, and refine literacy plans.

### MEASURING EFFECTIVENESS



- **STAR Renaissance Assessments** will be given throughout the year to measure student progress.
- **Assessment data** will be analyzed and used to drive instruction and determine student needs.

**4**  
STEP  
CYCLE



1



**Assess Current Learning Status**

2



**Identify Areas In-need**

3



**Provide Targeted Supports**

4



**Monitor Progress**

## STUDENT SUPPORT

### MENTAL HEALTH & SOCIAL & EMOTIONAL WELLBEING

Workforce's intervention team consisting of



**5** INTERVENTIONISTS

**1** SOCIAL WORKER

**5** COUNSELORS

*will work with students, families & staff to support mental health and social emotional wellbeing*

### SUPPORT FOR UNDUPLICATED STUDENTS



**Pre-access courses** & remediation software tools help support struggling readers.



**Case Carriers of Special Education students** review options and strategies to determine the most appropriate approach for each student.



KHSD works with **local community partners** to provide mentoring and support to Foster Youth & students experiencing homelessness.

### HEALTH & NUTRITION



**DAILY MEAL PICKUP**  
AVAILABLE 5 DAYS PER WEEK



**PERSONAL PROTECTIVE EQUIPMENT**  
FOR ALL STUDENTS AND TEACHERS



**DAILY HEALTH SCREENING**  
PROTOCOL FOR DAILY INSTRUCTION



**CURBSIDE MEAL PICKUP**  
AVAILABLE AT EACH SCHOOL SITE

