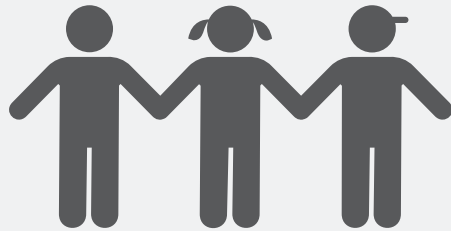


Local Control and Accountability Plan



DISTRICT STORY



3,724 TK-12th grade STUDENTS



8 SCHOOLS



4 DISTINGUISHED Schools



420 EMPLOYEES

STUDENT GROUPS



53%
Low Income



22%
English Learners



4%
Homeless



13%
Students with Disabilities

Student Centered Goals & Equitable Access to Education

Focus on equitable access to programs, curriculum, & instruction for all students.



Increasing Staff Capacity

Increase staff capacity through Professional Development, Professional Learning Communities, & Collaboration.



Empowering Stakeholders

Empower students, families, staff and stakeholders to take part in building and sustaining an inclusive, connected, and proactive school community.



BUDGET



General Fund Expenditures:
\$55,366,037

General Fund expenditures are broken down into the following categories:

- Salaries:** 60%
- Benefits:** 27%
- Services:** 10%
- Books:** 3%
- Other:** <1%

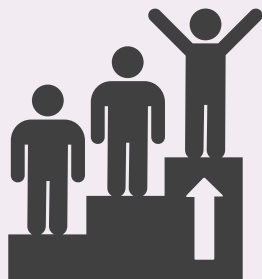
LCAP Expenditures:
\$6,103,708

Specified LCAP expenditures make up **11%** of General Fund expenditures.

GOAL

#1

INVESTING
\$4,467,957



Increase All Student Achievement

Targeting English Learners, Students with Disabilities, Low Income Students, & Foster Youth

HIGHLIGHTED OUTCOMES & METRICS

	INCREASE UC/CSU REQUIREMENT COMPLETION RATE	↑ to 40%
	INCREASE ENGLISH LEARNERS SCORING 3 OR 4 ON ELPAC	+10% pts Annually
	INCREASE 3+ AP EXAM SCORES	↑ to 75%
	INCREASE CAASPP MATH & ELA SCORES	↑ 51% ELA 40% Math
	INCREASE ENGLISH LEARNER RECLASSIFICATION RATE	+ 5% pts Annually

HIGHLIGHTED ACTIONS, EXPENDITURES & TARGETS

1.1 - Implement School Site Plans for Student Achievement (SPSA) at each school site.	\$2,174,697	
1.4 - Hire 6 Elementary Intervention Teachers for targeted English and Math skills improvement.	\$500,000	
1.6 - Implement partnership with CA Education Partners to support Math proficiency of PreK-3rd graders.	N/C	
1.7 - Hire a CTE Coordinator to support engagement at the High School and to educate students about possible career pathways.	\$90,023	
1.9 - Develop and implement After School Expanded Learning and Support Opportunities for K-8.	\$85,000	

Local Control and Accountability Plan



GOAL #2 INVESTING \$556,586

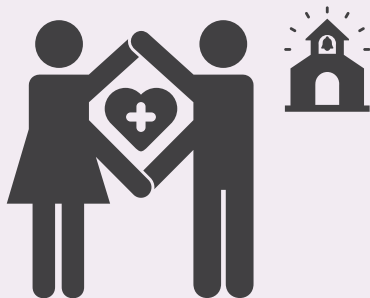


Provide High-Quality Instruction & Curriculum Through Staff Support

HIGHLIGHTED OUTCOMES & METRICS		
	REDUCE % OF ENGLISH LEARNERS WHO ARE OR ARE AT RISK OF BECOMING LTELs	-10% pts Annually
	INCREASE LCAP SURVEY PARTICIPATION RATE	↑ 38% Students ↑ 56% Staff
	INCREASE CTE PATHWAY COMPLETION RATE IN ARTS, MEDIA, & ENTERTAINMENT	↑ 10 Students
	MAINTAIN FULL ACCESS TO STANDARDS ALIGNED MATERIALS	= 100%
	MAINTAIN FULLY CREDENTIALLED & APPROPRIATELY ASSIGNED TEACHERS	= 100%

HIGHLIGHTED ACTIONS, EXPENDITURES & TARGETS		
2.1 - Hire 3 Content Area Specialists to support teacher implementation of targeted English Language Arts, Math, and ELD practices, curriculum, and instruction.	\$303,781	
2.2 - Conduct a survey of staff regarding Professional Development needs, equitable practices, and organizational alignment.	\$1,050	
2.3 - Design a Professional Development plan focused on how to support teachers on best practices to meet the unique needs of targeted student groups.	\$156,839	
2.4 - Content Area Specialists will assist in implementation of the Professional Development Plan.	\$88,840	

GOAL #3 INVESTING \$1,079,165



Support a Positive Climate and Culture

HIGHLIGHTED OUTCOMES & METRICS		
	DECREASE CHRONIC ABSENTEEISM	↓ 10%
	REDUCE STUDENT DROPOUT RATE	↓ <10% High School = 0% Middle School
	INCREASE GRADUATION RATE	↑ 90.6% Overall ↑ 90.2% SWD
	MAINTAIN ZERO PERCENT EXPULSION RATE	= 0%
	MAINTAIN OR INCREASE ATTENDANCE RATE	=/↑ 93%

HIGHLIGHTED ACTIONS, EXPENDITURES & TARGETS		
3.1 - Hire 1 Elementary Counselor to support Social-Emotional Learning and professional development.	\$112,830	
3.4 - Identify, select, and implement safe schools curriculum (relationships/sexual harassment, sexual health and reproduction, drug use/abuse, suicide prevention and mental health awareness and education).	\$10,000	
3.8 - Provide after school bussing for school activities.	\$15,000	
3.9 - Provide parents the opportunities, resources, and support to develop skills in assisting their children through the educational experience.	\$53,424	

