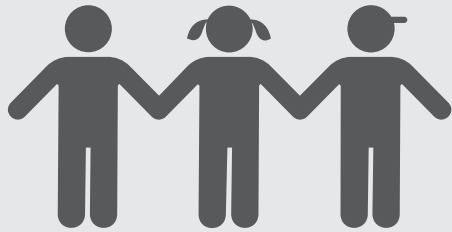


Local Control & Accountability Plan Summary

2021-22
Lake Tahoe USD
Page 1 of 2



DISTRICT STORY

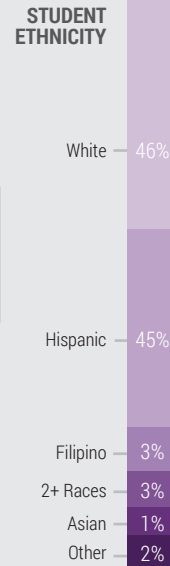
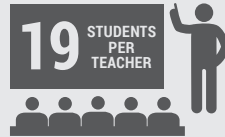


3,724 TK-12th grade STUDENTS



8 SCHOOLS

High School: 1 Alternative Ed: 1
Junior High: 1 School of Choice: 1
Elementary: 4



STUDENT GROUPS



Student Centered Goals and Equitable Access to Education

Focus on equitable access to programs, curriculum, and instruction for all students.



Increasing Staff Capacity

Increase staff capacity through Professional Development, Professional Learning Communities, & Collaboration.

Empowering Stakeholders

Empower students, families, staff and stakeholders to take part in building and sustaining an inclusive, connected, and proactive school community.



LCAP HIGHLIGHTS



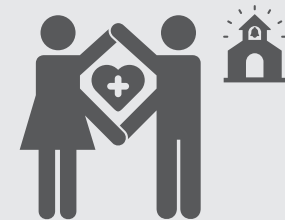
Increase All Student Achievement

GOAL	Highlighted Actions & Expenditures	
#1	1.3 - Implement the Ellevation ELD Monitoring Platform	\$118,039
	1.9 - Develop & implement After School Expanded Learning Opportunities	\$85,000



Provide High-Quality Instruction & Curriculum Through Staff Support

GOAL	Highlighted Actions & Expenditures	
#2	2.2 - Conduct staff survey on PD needs, equitable practices, & organizational alignment	\$1,050
	2.5 - Provide collaboration time for Professional Learning Communities	\$6,076



Support a Positive Climate and Culture

GOAL	Highlighted Actions & Expenditures	
#3	3.3 - Implement PBIS district-wide	\$348,941
	3.4 - Identify, select, and implement safe schools curriculum	\$10,000
	3.8 - Provide after-school bussing for school activities	\$15,000



Local Control & Accountability Plan Summary



REFLECTIONS: SUCCESSES

<h3>Increased ELA Proficiency</h3>	<p>Indicator: California School Dashboard</p> <p>Change: Increased</p>
<h3>Reduced Chronic Absenteeism</h3>	<p>Indicator: California School Dashboard</p> <p>Status: 11.7% Change: Declined</p>
<h3>Met All Local Indicators on CA Dashboard</h3>	<p>Met all 8 Local indicators</p>

Planned Actions to Maintain Progress:

- 1.4 - Hire 6 Elementary Intervention Teachers for targeted English & Math skills improvement.
- 1.9 - Develop and implement After School Expanded Learning and Support Opportunities for K-8.
- 2.1 - Hire 3 Content Area Specialists to support teacher implementation of targeted English Language Arts, Math, and ELD practices, curriculum, and instruction.

REFLECTIONS: IDENTIFIED NEEDS

<h3>Increase Math Proficiency</h3>	<p>Indicator: California School Dashboard</p> <p>Change: Declined</p>
<h3>Reduce Suspension Rate</h3>	<p>Indicator: California School Dashboard</p> <p>Status: 3.9% Change: Increased</p>
<h3>Increase Graduation Rate</h3>	<p>Indicator: California School Dashboard</p> <p>Status: 87.4% Change: Declined</p>
<h3>Increase College/Career Readiness</h3>	<p>Indicator: California School Dashboard</p> <p>Status: 35.1% Change: Declined</p>

Planned Actions to Address Needs:

- 1.5 - Hire 6 Paraprofessionals for targeted English & Math skills improvement.
- 1.6 - Implement partnership with CA Education Partners to support Math proficiency of PreK-3rd graders.
- 3.3 - Fully implement Positive Behavioral Interventions and Support (PBIS) districtwide.
- 3.5 - Hire a Student Advocate to provide SEL/Behavioral and Mental Health Services, Supports, Resources.
- 3.9 - Parent opportunities, resources & support to assist their students.

PERFORMANCE GAPS

<p>Subgroup in Need:</p>	<p>State Indicators:</p> <ul style="list-style-type: none"> 1. Chronic Absenteeism 2. Suspension Rate 3. English Learner 4. Graduation Rate 5. College/Career Readiness 6. ELA Assessment 7. Math Assessment
<h3>Students Experiencing Homelessness</h3>	
<h3>Foster Youth</h3>	

Planned Actions to Address Performance Gaps:

- 1.10 - Hire an additional McKinney Vento Assistant to support improved student outcomes for Homeless and Foster Youth (academic tutoring, placement support, school access).
- 3.2 - Elementary Counselor will assist with implementation of research and evidence-based Social Emotional Learning Practices.
- 3.8 - Provide after school bussing for school activities (expanded learning opportunities, athletics, enrichment activities).

COMPREHENSIVE SUPPORT & IMPROVEMENT

<h3>IDENTIFIED SCHOOL</h3> <p>Mt. Tallac Continuation High School</p>	<h3>PROVIDE SUPPORT FOR SCHOOL</h3> <p>Lake Tahoe USD supported this school in developing CSI plans through:</p> <ul style="list-style-type: none"> School-level needs assessments Establishment of a School Site Council Development of a process for engaging stakeholders in evidence-based planning and decision making 	<h3>MONITOR & EVALUATE EFFECTIVENESS</h3> <p>Implementation & effectiveness of the CSI plan will be monitored through:</p> <ul style="list-style-type: none"> Quarterly reviews of planned actions & services Attendance and participation tracking Student surveys assessing social-emotional and mental health
---	--	---