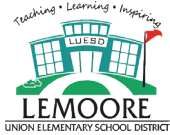


# Local Control & Accountability Plan Summary

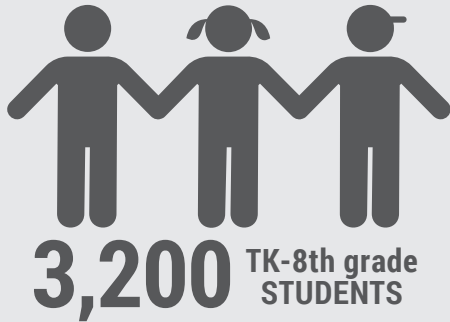
2022-23

Lemoore Union Elementary School District

Page 1 of 2



## DISTRICT STORY

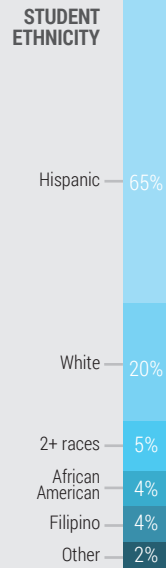


Elementary: 5    Alternative Ed: 1  
Middle School: 1    Charter School: 1



### STUDENTS PER TEACHER

K:	20	5 <sup>th</sup> :	28
1 <sup>st</sup> /2 <sup>nd</sup> :	24	6 <sup>th</sup> :	28
3 <sup>rd</sup> :	27	7 <sup>th</sup> :	25
4 <sup>th</sup> :	25	8 <sup>th</sup> :	27



### STUDENT GROUPS



### District Vision

Focused on Teaching, Learning & Inspiring by being focused on EACH ONE – Every student, All staff, Committed to, High expectations, Oriented to results, No excuses, Excellence every day.



### Professional Learning Communities

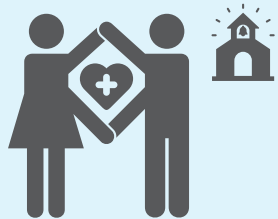
Team members work Interdependently to achieve learning outcomes & achievement goals.

### District Mission

To do whatever it takes to ensure that every child is empowered with the skills & knowledge necessary to be successful in life.



## LCAP HIGHLIGHTS



### Provide a Safe & Nurturing Learning Environment

GOAL

#1

#### Highlighted Actions

- 1.1 - Counseling services & social emotional supports
- 1.4 - After school sports & other extra-curricular programs
- 1.5 - Attendance communication system to help identify and coordinate necessary interventions



### Maximize Pupil Achievement & Success

GOAL

#2

#### Highlighted Actions

- 2.1 - Three additional professional development days
- 2.4 - Provide ELD support
- 2.6 - Six Learning Coordinators to provide coaching, lesson demonstrations and site-based professional development



### Provide Access to a Broad Range of Courses

GOAL

#3

#### Highlighted Actions

- 3.1 - Fine arts instruction for 2nd-6th graders
- 3.2 - A fine arts program that includes 5 music teachers for 4th-8th graders
- 3.3 - Physical Education program for TK-6th graders



# Local Control & Accountability Plan Summary

2022-23

Lemoore Union Elementary School District

Page 2 of 2



## REFLECTION: SUCCESSES



**Reduced  
Suspension  
Rate**



**Surpassed  
State Average  
on ELA CAASPP**



**Surpassed State  
Average on Math  
CAASPP**

Indicator: Local Metric



Indicator: CAASPP Results



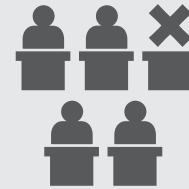
Indicator: CAASPP Results



### Planned Actions to Maintain Progress:

- 1.1** - Provide counseling services and Social Emotional Support for TK- 8 grade students.
- 2.5** - Operate class size reduction at 24:1 pupil to teacher ratio in the K- 3 grade span.
- 2.6** - Six Learning Coordinators provide coaching, lesson demonstrations and site-based professional development to support the school's instructional program.
- 3.1** - All second through sixth grade pupils receive instruction in fine arts throughout the school year to enhance and improve engagement in the learning environment.

## REFLECTION: IDENTIFIED NEEDS



**Reduce Chronic  
Absenteeism**



**Increase Daily  
Attendance Rate**



**English Learner  
Reclassification**

Indicator: Local Metric



Indicator: Local Metric



Indicator: Local Metric



### Planned Actions to Address Needs:

- 1.5** - Each school will promote positive attendance using an attendance communication system to support early identification of and coordinate interventions for truancy and chronic absenteeism.
- 1.6** - Provide Administrative Intervention Services for Middle School Pupils.
- 2.4** - Provide ELD support under the direction of the certificated English language development teachers, with trained paraprofessionals providing English learners with daily instructional services in English language development and acquisition.

