

# Local Control & Accountability Plan Summary

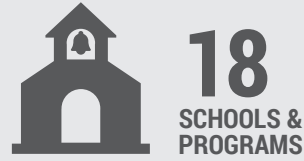
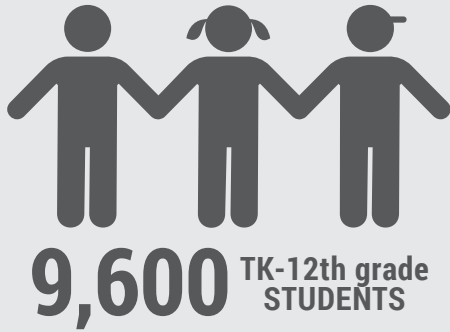
2022-23

Lompoc Unified School District

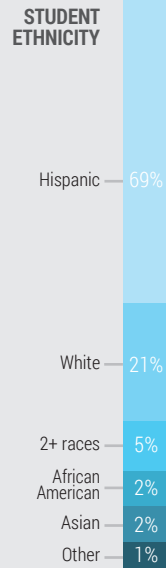
Page 2 of 2



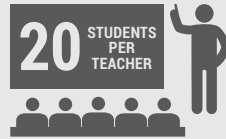
## DISTRICT STORY



High School: 2	Alternative Ed: 1
Junior High: 2	Charter: 1
Elementary: 9	Independent Study: 1
Adult: 1	Community Day: 1



### STUDENT GROUPS



### Wide Range of Student Programs

Middle & High School opportunity classes & specialists support bilingual, migrant, gifted & special needs students.



### Cooperative & Collaborative Atmosphere

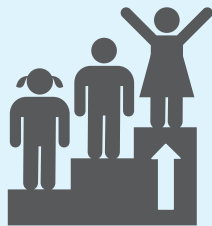
Win-win negotiations & problem solving are institutionalized at all levels.

### District Mission

Committed to District-wide actions which lead students to develop the skills, knowledge & character traits necessary to become responsible, thriving, & contributing members of society.



## LCAP HIGHLIGHTS



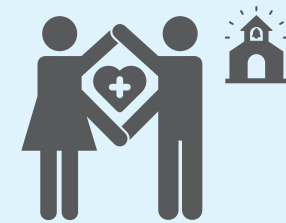
### Maximize Academic Achievement

GOAL	Highlighted Actions & Expenditures	
#1	1.5 - Provide resources & services supporting College & Career Readiness	\$2,852,707
	1.6 - Offer activities to support whole child enrichment and STEAM programming	\$2,784,468



### Promote Positive, Effective Communication

GOAL	Highlighted Actions & Expenditures	
#2	2.1 - Increase outreach to English learners' parents in their primary language	\$116,483
	2.2 - Connect unduplicated families to appropriate resources	\$613,143



### Provide a Safe, Respectful Learning Environment

GOAL	Highlighted Actions & Expenditures	
#3	3.4 - Partner with community agencies to provide social/emotional support	\$1,182,566
	3.5 - Increase staffing to support health and wellbeing (nurses, health clerks, etc.)	\$1,739,050



# Local Control & Accountability Plan Summary

2022-23

Lompoc Unified School District

Page 2 of 2

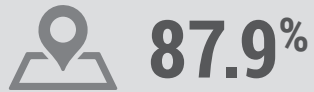


## REFLECTION: SUCCESSES



### Graduation Rate

Indicator: 20-21 DataQuest



### Attendance Rate

Indicator: 20-21 DataQuest



#### Planned Actions to Maintain Progress:

- 1.6 - Offer activities and opportunities supporting whole child enrichment and STEAM programming.
- 1.10 - Offer extended instructional learning time and summer programming to support credit recovery.
- 1.14 - Employ additional personnel to support high-need students.
- 3.2 - Implement LUSD Attendance Mediation Program.

## REFLECTION: IDENTIFIED NEEDS



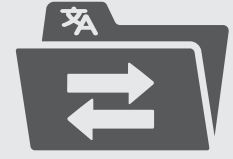
### AP Course Enrollment

Indicator: Local Metric



### College & Career Readiness

Indicator: College and Career Indicators



### English Learner Reclassification

Indicator: ELPAC



#### Planned Actions to Address Needs:

- 1.5 - Provide resources & services supporting College & Career Readiness.
- 2.1 - Increase outreach to English learners' parents in their primary language.
- 3.4 - Partner with community agencies to provide social/emotional support for students and families.
- 3.6 - Provide monthly professional development opportunities in both academics and behavior with a focus on high-need students.

## COMPREHENSIVE SUPPORT & IMPROVEMENT

### IDENTIFIED SCHOOLS



- Maple High School
- Lompoc Valley Middle School

### PROVIDE SUPPORT FOR SCHOOLS

Lompoc USD supported these schools in developing CSI plans through:



- School-level needs assessments
- Analysis of dashboard & survey data
- Support with budget allocations, documentation, and reporting

### MONITOR & EVALUATE EFFECTIVENESS

Implementation & effectiveness of the CSI plan will be monitored through:



- Site-based meetings with Coordinators of Education Services
- Review of data-based metrics
- Assistance in developing mid year & end of year surveys & other progress monitoring tools

