

# Local Control & Accountability Plan Summary

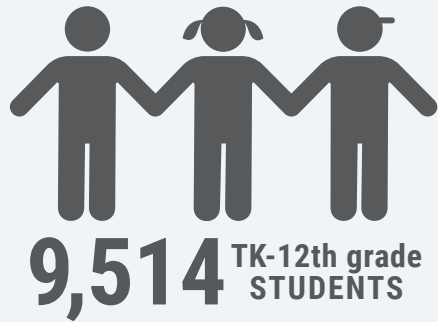
2023-24

Lompoc Unified School District

Page 1 of 2



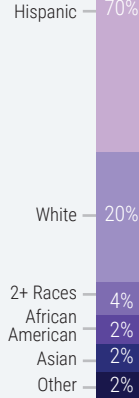
## DISTRICT STORY



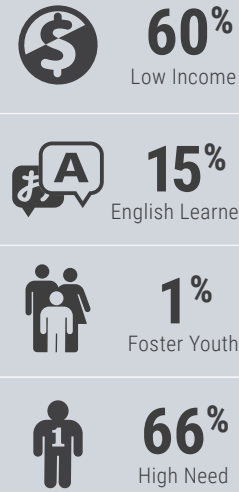
**18**  
SCHOOLS & PROGRAMS

High School: 2	Alternative Ed: 1
Junior High: 2	Charter: 1
Elementary: 9	Independent Study: 1
Adult: 1	Community Day: 1

### STUDENT ETHNICITY



### STUDENT GROUPS



### Wide Range of Student Programs

Middle & High School opportunity classes & specialists support bilingual, migrant, gifted & special needs students.

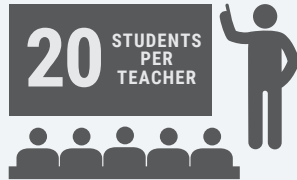


### Cooperative & Collaborative Atmosphere

Win-win negotiations & problem solving are institutionalized at all levels.

### District Mission

Committed to District-wide actions which lead students to develop the skills, knowledge & character traits necessary to become responsible, thriving, & contributing members of society.



## LCAP HIGHLIGHTS

### GOAL #1



### Maximize Academic Achievement

#### Highlighted Actions

- 1.4 - Establish core curriculum councils for instructional planning.
- 1.9 - Expand CTE programs to boost career readiness.
- 1.13 - Connect homeless & FY families with resources.

### GOAL #2

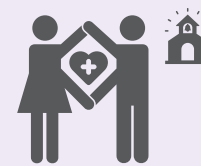


### Promote Engagement of All Educational Partners

#### Highlighted Actions

- 2.1 - Increase outreach to English learners' parents in their primary language.
- 2.2 - Employ district translators.
- 2.4 - Conduct district-wide workshops for parenting and academic preparation.

### GOAL #3



### Provide a Safe, Respectful Learning Environment

#### Highlighted Actions

- 3.1 - Monitor student data for PBIS implementation.
- 3.4 - Contract with outside agencies for social/emotional support.
- 3.8 - Purchase supplies for homeless students.

### GOAL #4



### Support Inclusivity for Students with Disabilities

#### Highlighted Actions

- 4.1 - Establish Special Education Council (SEC) for student inclusion.
- 4.2 - Fund collaborative planning hours for co-teaching strategies implementation.
- 4.4 - Provide training on inclusive practices.



# Local Control & Accountability Plan Summary

2023-24

Lompoc Unified School District

Page 2 of 2

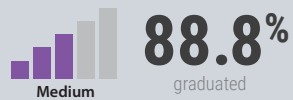


## REFLECTION: SUCCESSES



### Graduation Rate

Indicator: 2022 CA School Dashboard



### English Learner Progress

Indicator: 2022 CA School Dashboard



## REFLECTION: IDENTIFIED NEEDS



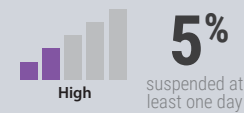
### Chronic Absenteeism

Indicator: CA School Dashboard



### Suspension Rate

Indicator: CA School Dashboard



### ELA & Math Proficiency

Indicator: CA School Dashboard



### Planned Actions to Maintain Progress:

- 1.2 - Implement data-driven strategies to enhance college readiness, provide academic support, offer credit recovery opportunities, foster partnerships with local colleges, and support programs like AVID and MESA that promote a college-going culture.
- 2.2 - Provide translation services, case management, and connect families to resources to ensure effective communication and support for non-English speaking, homeless, and immigrant families.

### Planned Actions to Address Needs:

- 1.10 - Provide extended summer instructional programs with a wide range of services and supports for the most vulnerable student populations.
- 3.2 - Implement strategies to reduce chronic absenteeism for all students through various interventions and monitoring systems.
- 3.4 - Partner with agencies to offer social/emotional support, safety measures, and restorative justice programs.

## COMPREHENSIVE SUPPORT & IMPROVEMENT

### IDENTIFIED SCHOOLS



- Lompoc Valley Middle School
- La Honda STEAM Academy
- Mission Valley Independent Study School

### PROVIDE SUPPORT FOR SCHOOLS

Lompoc USD supported these schools in developing CSI plans through:



- School-level needs assessments
- Analysis of dashboard & survey data
- Support with budget allocations, documentation, and reporting

### MONITOR & EVALUATE EFFECTIVENESS

Implementation & effectiveness of the CSI plan will be monitored through:



- Regular meetings between District & site admin
- Review of CSI and SPSA goals alignment
- Analysis of mid-year and end-of-year surveys
- Staff feedback for plan adjustments

