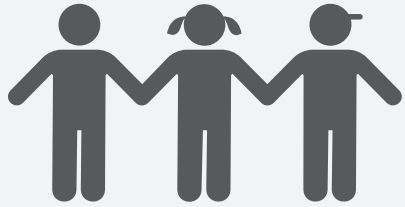


# Local Control and Accountability Plan



## DISTRICT STORY



**4,435** TK-12th grade STUDENTS

**9**  
SCHOOLS

**2**  
DISTINGUISHED Schools

**216**  
TEACHERS

### STUDENT GROUPS



**88%**  
Low Income



**49%**  
English Learners



**30%**  
Homeless/  
Foster Youth



**90%**  
High Need



### Mission Statement

Ensuring that all students graduate college, career and life ready.



### Our Belief

"We believe in our students, or families, and our community. What WE dream, engage in, and achieve together matters!"



### Our Vision

We have a system where all students know that all adults believe in them and support them; where students have access to opportunities and have many options for success; and where we all work collaboratively with shared responsibility to ensure that each child succeeds and thrives.

## BUDGET



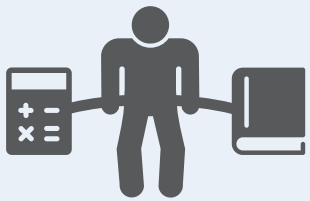
General Fund Expenditures:  
**\$93,529,587**

General Fund expenditures are broken down into the following categories:

LCAP Expenditures:  
**\$87,739,395**

Specified LCAP expenditures make up **94%** of General Fund expenditures.

BROAD GOAL #1 INVESTING \$58,718,445



**Rigorous  
Equitable  
Instruction**

### HIGHLIGHTED OUTCOME TARGETS



MAINTAIN ENROLLMENT IN CTE COURSES **=807**



INCREASE AP TEST SCORES (scoring 3 or higher) **↑ 40%**



INCREASE GRADUATION RATE **↑ 93%**

### HIGHLIGHTED ACTIONS

- 1.1 - Facilitate teacher collaboration to align on priority standards across all subjects.
- 1.5 - Offer real-world learning experiences, including CTE and project-based learning, to integrate academics and 21st-century skills for EL and low-income students.
- 1.6 - Develop a TK-12 Biliteracy pathway, leading to a Seal of Biliteracy upon graduation.

BROAD GOAL #2 INVESTING \$14,432,665



**Student  
Engagement &  
Connection**

### HIGHLIGHTED OUTCOME TARGETS



INCREASE STUDENT ATTENDANCE RATES **↑ 95%**



REDUCE SUSPENSION RATES **↓ 2.5%**



INCREASE % OF STUDENTS ON TARGET (measured on social-emotional screeners) **↑ 87%**

### HIGHLIGHTED ACTIONS

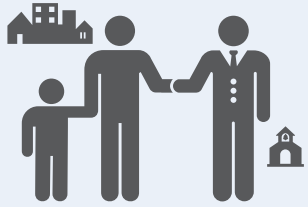
- 2.1 - Provide social-emotional learning and additional mental health supports as needed.
- 2.2 - Implement positive behavior interventions to address suspension rates.
- 2.4 - Promote events that reflect student identities, improving access and engagement for unduplicated students.



# Local Control and Accountability Plan



BROAD GOAL #3 INVESTING \$13,838,523



## Parent & Community Connections

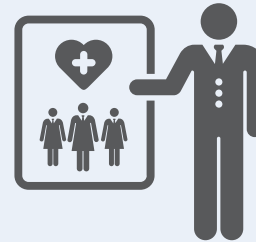
### HIGHLIGHTED OUTCOME TARGETS

|  |  |       |
|--|--|-------|
|  | INCREASE ADULT EDUCATION STUDENT ENROLLMENT          | ↑ 250 |
|  | INCREASE PARENTS' PERCEPTION OF SCHOOL CONNECTEDNESS | ↑ 53% |
|  | INCREASE EARLY LEARNING STUDENT ENROLLMENT           | ↑ 175 |

### HIGHLIGHTED ACTIONS

- 3.1 - Provide transportation with extra routes for after-school enrichment & sports.
- 3.2 - Increase family engagement opportunities, focusing on English Learner and Low-Income families.
- 3.4 - Offer multilingual workshops for parents on academics, SEL, special education, and college readiness for targeted families.

BROAD GOAL #4 INVESTING \$459,240



## Staff Engagement & Connection

### HIGHLIGHTED OUTCOME TARGETS

|  |  |  |
|--|--|--|
|  | INCREASE APPROPRIATELY ASSIGNED AND FULLY CREDENTIALLED TEACHERS | ↑ 100%<br>Credentialed<br>0%<br>Misassignments |
|  | IMPROVE STAFF PERCEPTION OF SCHOOL SAFETY & CONNECTEDNESS        | ↑ 58%  |

### HIGHLIGHTED ACTIONS

- 4.1 - Enhance staff recruitment through partnerships with teacher prep programs and streamlined HR processes.
- 4.2 - Improve staff retention by clarifying roles, fostering teamwork, and resolving conflicts quickly.
- 4.4 - Conduct empathy interviews to understand staff motivations and apply continuous improvement to strengthen systems.

FOCUS GOAL #5 INVESTING \$0



## ELA & Math Achievement

### HIGHLIGHTED OUTCOME TARGETS

|  |  |  |
|--|--|--|
|  | INCREASE ELA CAASPP ASSESSMENT SCORES (measured as points from standard) | ↑ -60<br>English Learners<br>-50<br>Homeless |
|--|--|--|

### HIGHLIGHTED ACTIONS

- 5.1 - Provide professional learning and support to implement clear learning objectives and success criteria, ensuring.

FOCUS GOAL #6 INVESTING \$23,814



## Reduced Suspension Rates

### HIGHLIGHTED OUTCOME TARGETS

|  |                         |      |
|--|-------------------------|------|
|  | REDUCE SUSPENSION RATES | ↓ 2% |
|--|-------------------------|------|

### HIGHLIGHTED ACTIONS

- 6.1 - Improve climate with behavior supports, alternatives to suspension, and connections for Foster and Homeless Youth.

FOCUS GOAL #7 INVESTING \$0



## College & Career Readiness

### HIGHLIGHTED OUTCOME TARGETS

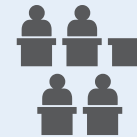
|  |  |       |
|--|--|-------|
|  | IMPROVE COLLEGE AND CAREER READINESS INDICATOR | ↑ 40% |
|--|--|-------|

### HIGHLIGHTED ACTIONS

- 7.1 - Enhance College and Career Readiness with A-G courses, CTE, dual enrollment, and progress tracking.

FOCUS GOAL #8 INVESTING \$266,670

### EQUITY MULTIPLIER



## Reduce Chronic Absenteeism

Central Bay HS, North Monterey County Center for Independent Study

### HIGHLIGHTED OUTCOME TARGETS

|  |                          |  |
|--|--------------------------|--|
|  | IMPROVE ATTENDANCE RATES | ↑ 95%<br>Central Bay<br>95%<br>Independent Study |
|--|--------------------------|--|

### HIGHLIGHTED ACTIONS

- 8.1 - Increase engagement at Central Bay High and NMC CIS with equine therapy, discipline support, and SEL training.

