

# LOCAL CONTROL ACCOUNTABILITY PLAN

Ontario-Montclair SD  
2018 - 2019 Highlights

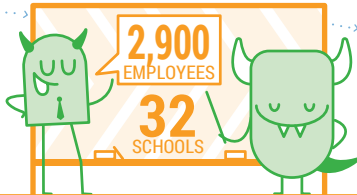


Ontario-Montclair SD's total 2018-19 budget...  
**\$259,484,874**

## DISTRICT OVERVIEW



- SPENT ON -

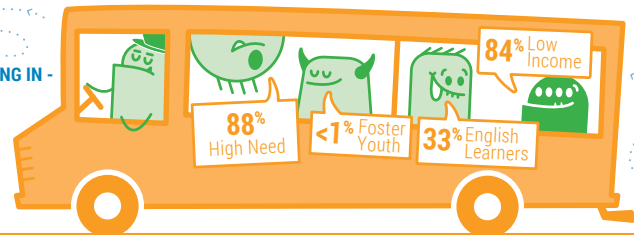


- WHO SERVE -

**21,100 Students**

- RESULTING IN -

**\$12,298**  
spent per student annually.



- WHO ARE -

### GOAL #1

## HIGH QUALITY LEARNING ENVIRONMENT

INVESTING \$94,204,816

#### HIGHLIGHTED OUTCOMES

**100%** MAINTAIN APPROPRIATELY CREDENTIALLED TEACHERS

**= 100%** ENSURE ENGLISH LEARNER TEACHING AUTHORIZATIONS

**= 0%** Extreme Deficiency  
MAINTAIN FACILITIES IN GOOD REPAIR

**100%** MAINTAIN ACCESS TO STANDARDS-ALIGNED MATERIALS

### GOAL #2

## INCREASE ACADEMIC ACHIEVEMENT

INVESTING \$8,733,628

#### HIGHLIGHTED OUTCOMES

**↑ 19** POINTS BELOW STANDARD ELA  
**INCREASE STUDENT ACHIEVEMENT**  
**↑ 48** POINTS BELOW STANDARD MATH

**↑ 49%** 2<sup>nd</sup>-8<sup>th</sup> GRADE  
**↑ 55%** 3<sup>rd</sup> GRADE  
INCREASE READING PROFICIENCY

### GOAL #3

## INCREASE STUDENT ENGAGEMENT

INVESTING \$7,372,589

#### HIGHLIGHTED OUTCOMES

DECREASE SUSPENSION RATE  
**↓ 2.2%**

DECREASE CHRONIC ABSENTEEISM  
**↓ 6.6%**

### GOAL #4

## SUPPORT PARENT ENGAGEMENT

INVESTING \$668,389

#### HIGHLIGHTED OUTCOMES

**= 100%** EXPAND PARENT INVOLVEMENT & INPUT

**= 100%** EXPAND PARENT RESOURCE ACCESS

#### HIGHLIGHTED ACTIONS

**4.00** Provide parent education & leadership workshops  
EXPENDITURE \$217,684

**4.01** Annual Parent Leadership Conference  
EXPENDITURE \$30,000

**4.02** Positive parenting & social/emotional & cultural proficiency workshops  
EXPENDITURE \$88,553

**4.03** Promote community service, college & university partnerships  
EXPENDITURE N/C



For additional LCAP resources use the QR code or go to [www.goboinfo.com](http://www.goboinfo.com) and search for your district.

Ontario-Montclair School District, 950 West D Street, Ontario, CA 91762; Phone: 909-459-2500; Website: [www.omsd.net](http://www.omsd.net); CDS#: 3667819000000



©2019 solutions@goboinfo.com (888) 938-7779



TELL US WHAT YOU THINK

WHICH LCAP ITEM IS MOST IMPORTANT FOR YOUR SCHOOL?

---

---

---

---

---

WHAT DOES YOUR SCHOOL DO BEST?

---

---

---

---

---

WHERE DOES YOUR SCHOOL NEED IMPROVEMENT?

---

---

---

---

---