

# Local Control & Accountability Plan Summary

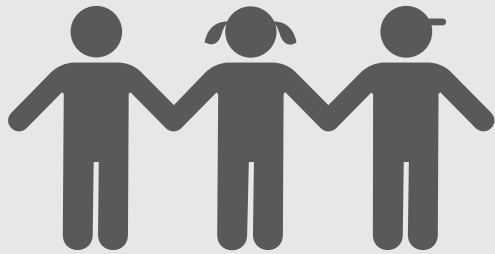
2022-23

College and Career Preparatory Academy

Page 1 of 2



## COLLEGE AND CAREER PREPARATORY ACADEMY (CCPA) STORY



**217** 9th-12th grade STUDENTS



**8** LOCATIONS



**20** EMPLOYEES



### STUDENT ETHNICITY

Hispanic 81%

White 11%

African American 2%

Other 6%

### STUDENT GROUPS

**91%** Low Income

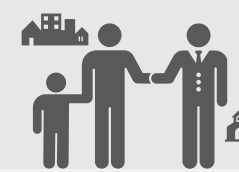
**20%** English Learners

**29%** Homeless

**93%** Unduplicated Students

### Academic Opportunities for All Students

CCPA provides learning opportunities for all pupils, with a focus on those who are identified as academically low achieving



### Community Partners

Workforce agencies and community partners are vital to the academic progress and meaningful learning experiences for CCPA students

### School Mission

CCPA addresses the need to increase the graduation rate and decrease the dropout rate by providing students the opportunities to earn their high school diploma and become college and career ready



## LCAP HIGHLIGHTS, 2021-2024

**GOAL #1**



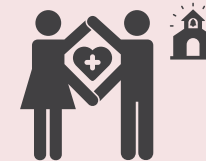
**Engage Students & Families**

**GOAL #2**



**Support Positive Student Outcomes**

**GOAL #3**



**Provide a Safe & Supportive Learning Environment**

### Expected Outcomes & Metrics



INCREASE STUDENT ENROLLMENTS

Increase to **↑ 300**



INCREASE GRADUATION RATE

Increase to **↑ 74%**



INCREASE NUMBER OF COMMUNITY PARTNERSHIPS

Increase to **↑ 45**

### Expected Outcomes & Metrics



INCREASE PERCENTAGE OF STUDENTS ATTENDING THEIR WEEKLY APPOINTMENTS

Increase to **↑ 90%**



INCREASE ADA CAPTURE RATE

Increase to **↑ 63%**



INCREASE GRADUATES ENROLLING IN COLLEGE OR APPLYING FOR JOBS

Increase to **↑ 70%**

### Expected Outcomes & Metrics



INCREASE STUDENTS MAKING PROGRESS ON READING LEVELS

Increase to **↑ 51%**



INCREASE STUDENTS MAKING PROGRESS ON MATH LEVELS

Increase to **↑ 40%**



INCREASE THE NUMBER OF CREDITS EARNED PER TERM BY STUDENTS

Increase to **↑ 11**



# Local Control & Accountability Plan Summary

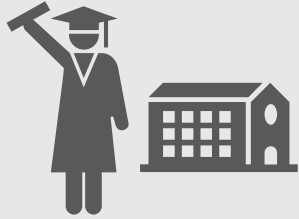
2022-23

College and Career Preparatory Academy

Page 2 of 2



## REFLECTIONS: SUCCESSES



**Graduation Rate**

**72%**

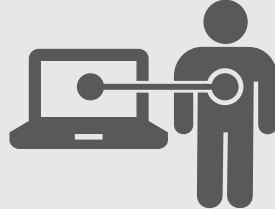
Consistent increase year after year



**Student Enrollment**

**+10%**

Increase from 20-21 school year



**Educational Technology**

**100%**

Students received Chromebooks

### Planned Actions to Maintain Progress:

- 1.1** - Provide opportunities for at-promise young adults and increase public awareness of CCPA through the use of marketing initiatives including outreach by CCPA staff to all educational stakeholders.
- 1.2(a)** - Streamline enrollment process to include temporary support staff during periods of peak enrollment to accommodate the increase of appointments scheduled for prospective students.
- 1.7** - Provide all students with extended learning opportunities (college tours, career fairs, and community partner workshops).
- 3.2** - Continue to incorporate curriculum adoption plans focused on core academic areas, CTE, and electives that incorporate a high level of cultural relevancy in curricular options.
- 3.3** - Designated ELD curriculum will be provided to students who are English Learners (ELs) that target the language needs of Long-Term ELs; continue to provide training to staff on this curriculum.

## REFLECTIONS: IDENTIFIED NEEDS



**Improve Student Attendance / Capture Rate**

**60%**

Average Daily Attendance/ Capture rate



**Support Student Academic & Social Emotional Needs**

**22%**

Students utilized Community Resource Specialist resources



**Improve Student Academic Growth**

**46%**

Students increasing reading level

**35%**

Students increasing math level

### Planned Actions to Address Needs:

- 1.2(b)** - Increase flexibility in attendance procedures to better meet the needs of adult students.
- 1.3** - Improve student participation with community partners and increase support staff to address student needs.
- 1.8** - Expand instructional & behavioral interventions and provide support services to address the critical needs of all students in order to effectively define a clear path to educational attainment.
- 2.3** - Implement a Multi-Tiered System of Support (MTSS) that begins at enrollment and addresses the academic and social-emotional needs of all adult students.
- 2.4** - Work with community partners in creating a food pantry distribution center on a CCPA site to support the local community and our families that eliminates barriers for students allowing them to concentrate on academic achievements.

