

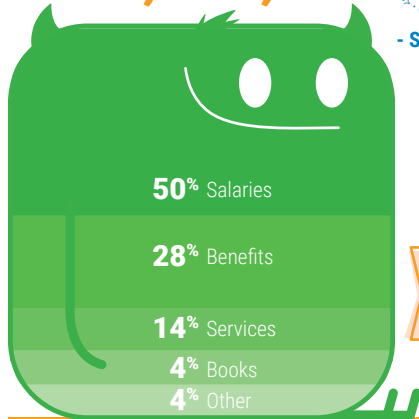
Local Control and Accountability Plan

Palmdale School District
2024-25 Highlights

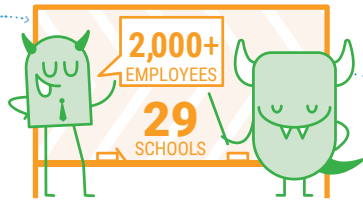


DISTRICT OVERVIEW

Palmdale SD's total 2024-25 budget...
\$393,962,833



- SPENT ON -



- WHO SERVE -

17,000+ Students

\$22,512
spent per student annually

- RESULTING IN -

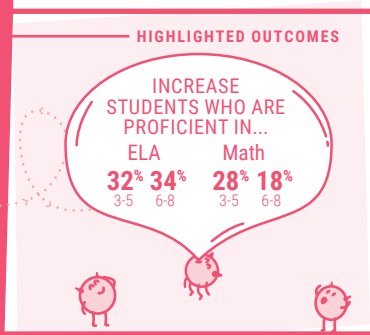


- WHO ARE -

Goal #1

Academic Excellence & College Readiness

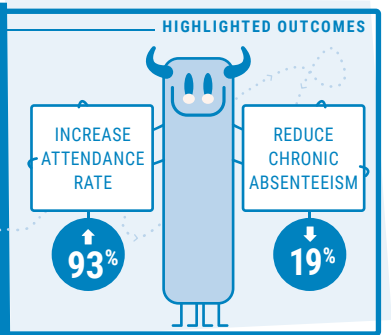
INVESTING \$42,827,048



Goal #2

Welcoming & Safe Learning Environments

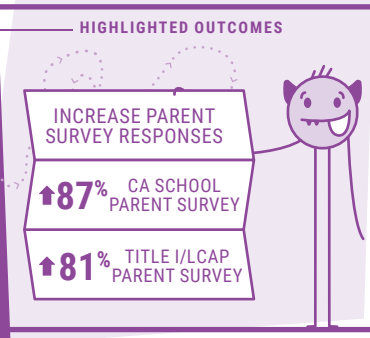
INVESTING \$29,584,708



Goal #3

Strengthen Family & Community Engagement

INVESTING \$4,581,956



Goal #4

Ensure Basic Services

INVESTING \$171,504,153



Equity Multiplier **Goal #5** INVESTING \$916,824

Foster Academic Growth

Innovations Academy

Equity Multiplier **Goal #6** INVESTING \$150,523

Implement Comprehensive Social-Emotional Curriculum

Oak Tree Community Day School

Equity Multiplier **Goal #7** INVESTING \$637,882

Achieve ELA & Math Proficiency

Palm Tree Elementary

Equity Multiplier **Goal #8** INVESTING \$1,009,453

Enhance Student Support & Engagement

SAGE Magnet Academy

Equity Multiplier **Goal #9** INVESTING \$88,419

Improve Literacy & Behavioral Support

Yellen Learning Center

Equity Multiplier **Goal #10** INVESTING \$615,777

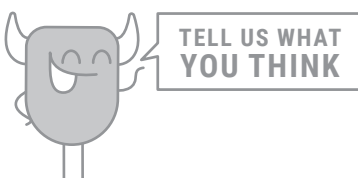
Boost Academic Growth

Yucca Elementary

For additional LCAP resources use the QR code or go to www.goboinfo.com and search for your district.

Palmdale School District, 39139 10th St. East, Palmdale, CA 93550;
Phone: 661-947-7191; Website: www.palmdalesd.org; CDS#: 19648570000000

©2024 solutions@goboinfo.com
(888) 938-7779



Which LCAP item is most important for your school?

What does your school do best?

Where does your school need improvement?
