

# LOCAL CONTROL ACCOUNTABILITY PLAN

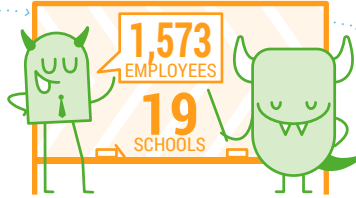
Rowland USD  
2019 - 2020 Highlights



Rowland USD's total 2019-20 budget...  
**\$169,312,599**

## DISTRICT OVERVIEW

- SPENT ON -



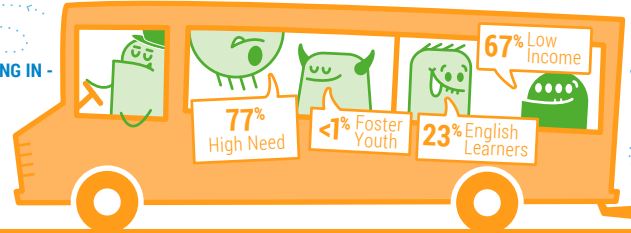
- WHO SERVE -

**13,176** Students

- RESULTING IN -

**\$12,850**  
spent per student annually

- WHO ARE -

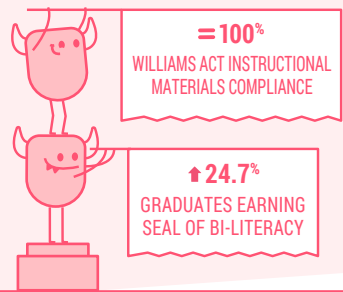


### GOAL #1

**ACADEMIC ACHIEVEMENT FOR ALL STUDENTS**

INVESTING \$77,256,479

#### HIGHLIGHTED OUTCOMES

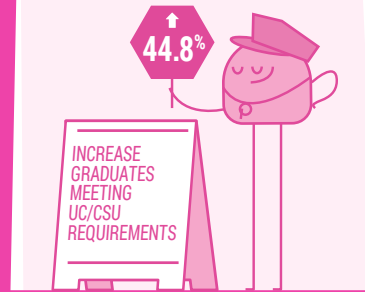


### GOAL #2

**COLLEGE/CAREER READINESS & 21ST CENTURY SKILLS**

INVESTING \$1,653,093

#### HIGHLIGHTED OUTCOMES



### GOAL #3

**COMMUNICATE & COLLABORATE**

INVESTING \$902,06780

#### HIGHLIGHTED OUTCOMES

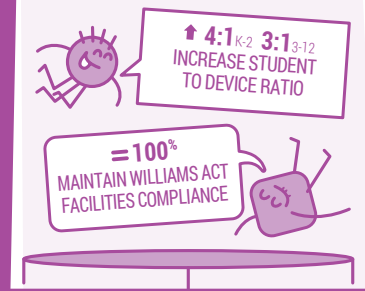


### GOAL #4

**FISCAL RESPONSIBILITY**

INVESTING \$6,196,013

#### HIGHLIGHTED OUTCOMES

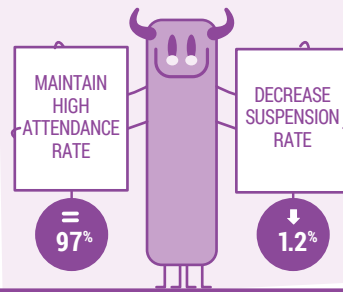


### GOAL #5

**STUDENT AND STAFF SAFETY & WELLNESS**

INVESTING \$3,512,202

#### HIGHLIGHTED OUTCOMES

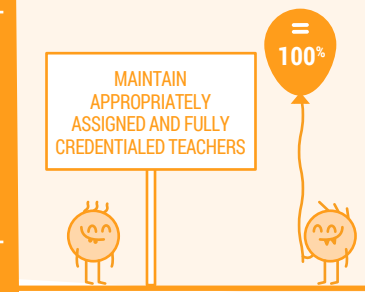


### GOAL #6

**STRONG LEADERSHIP**

INVESTING \$13,210,880

#### HIGHLIGHTED OUTCOMES



For additional LCAP resources use the QR code or go to [www.goboinfo.com](http://www.goboinfo.com) and search for your district.

Rowland USD, 1830 South Nogales St., Rowland Heights CA 91748-2945; Phone: (626) 965-2541; Website: [www.rowlandschools.org](http://www.rowlandschools.org); CDS#: 1973452000000



©2020 [solutions@goboinfo.com](mailto:solutions@goboinfo.com) (888) 938-7779



TELL US WHAT YOU THINK

WHICH LCAP ITEM IS MOST IMPORTANT FOR YOUR SCHOOL?

\_\_\_\_\_  
\_\_\_\_\_  
\_\_\_\_\_

WHAT DOES YOUR SCHOOL DO BEST?

\_\_\_\_\_  
\_\_\_\_\_  
\_\_\_\_\_

WHERE DOES YOUR SCHOOL NEED IMPROVEMENT?

\_\_\_\_\_  
\_\_\_\_\_  
\_\_\_\_\_