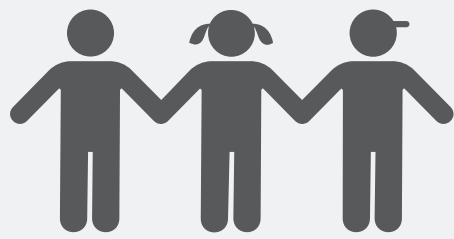


# Local Control and Accountability Plan

## DISTRICT STORY



**54,063** TK-12 STUDENTS

**121** SCHOOLS

**47** DISTINGUISHED Schools

**10,506** EMPLOYEES

### STUDENT GROUPS



**62%**  
Low Income



**52%**  
English Learners



**<1%**  
Foster Youth



**28%**  
High Need

### Key LCAP Elements

Teaching & Learning, Safe & Supportive Schools, Family Empowerment, Talent, Culture, and Resource Management



### District Vision 2025:

Every student will discover their spark, along with a strong sense of self & purpose, & graduate college & career ready



### District Mission

Every day we provide each and every student the quality instruction and equitable support required to thrive in the 21st Century



## BUDGET

District Operating Budget:  
**\$920,416,282**

District Operating Budget is broken down into the following categories:



**Unrestricted General Fund Expenditures:**  
**\$600,586,383**

Unrestricted General Fund expenditures make up **65%** of District Operating Budget

## GOAL

**#1**

INVESTING  
**\$385,243,880**



## Student Achievement

### HIGHLIGHTED EXPECTED OUTCOMES & METRICS



INCREASE SBAC ELA & MATH PROFICIENCY

**↑**



INCREASE COLLEGE & CAREER READINESS

**↑72.3%**



INCREASE 3+ AP SCORES

**↑ 70%**



INCREASE GRADUATION RATE

**↑89.7%**



ELS GAIN 1 PROFICIENCY LEVEL ON CELDT

**↑61.8%**

### HIGHLIGHTED ACTIONS, EXPENDITURES & TARGETS

1.01 - Coherent preschool to 3rd grade instruction continuum	\$6,500,000	All Students
1.03 - Support site-based Core Curriculum coaching	\$1,775,672	
1.06 - Engaging instruction, credit recovery options, & 9th grade transition program ensure college or career readiness	\$6,600,000	
1.09 - Ensure African American students receive rigorous, relevant instruction & academic supports	\$1,000,000	African American Students
1.10 - Professional Development & technical assistance for Students with Disabilities	\$65,900,000	Students with Disabilities
1.15 - Provide ILPs at programs serving youth in educational transition	\$838,240	

## GOAL

**#2**

INVESTING  
**\$149,520,000**



## Access & Equity

### HIGHLIGHTED OUTCOMES & METRICS



INCREASE ENGLISH LEARNER RECLASSIFICATION RATE

**↑ 17%**



DECREASE CHRONIC ABSENTEEISM

**↓** 7% Elementary  
6% Middle School  
12% High School



DECREASE SUSPENSION RATE

**↑ 0.6%**



MAINTAIN LOW EXPULSION RATE

**= 0%**



MAINTAIN POSITIVE CULTURE/CLIMATE STUDENT SURVEY RESPONSES

**=/↑ 69%**

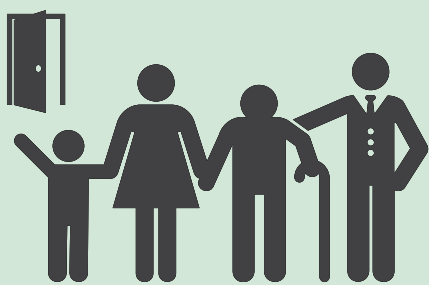
### HIGHLIGHTED ACTIONS, EXPENDITURES & TARGETS

2.01 - Monitor student absences, suspensions, discipline, out of class time & interventions	\$3,300,000	All Students
2.02 - Continue behavioral RtI implementation	\$14,400,000	
2.07 - Continue Foster Youth infrastructure support	\$300,000	Foster Youth
2.08 - Improve District school site facilities (manage design & construction, facility improvements & deferred maintenance responses)	\$36,100,000	All Students
2.10 - Access to healthy food & nutrition	\$4,000,000	
2.11 - Maintain staffing ratio of counselors, school psychologists, & school nurses	\$2,800,000	

## GOAL

**#3**

INVESTING  
**\$45,490,239**



## Accountability

### HIGHLIGHTED OUTCOMES & METRICS



FACILITIES ARE IN GOOD REPAIR

**↑ 100%**



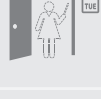
INCREASE SUBJECT AREA CREDENTIALLED TEACHERS

**↑ 91%**



INCREASE TEACHER RETENTION RATE

**↑ 90%**



MAINTAIN LOW TEACHER VACANCY RATE

**↓ 5%**



INCREASE STAFF CLIMATE SURVEY POSITIVE RESPONSE RATE

**↑75.75%**

### HIGHLIGHTED ACTIONS, EXPENDITURES & TARGETS

3.01 - Actively engage students in leadership opportunities & maintain robust school-to-family communications	\$1,100,000	All Students
3.03 - Strengthen structures for shared responsibility across District departments	\$2,800,000	
3.04 - Communicate with families via email/text message & improve family contact information collection in SIS	\$200,000	
3.09 - Recruit & retain diverse talent reflective of community	\$5,100,000	
3.10 - Develop critical tools & systems, build a resilient infrastructure, & redefine the classroom experience	\$13,200,000	

