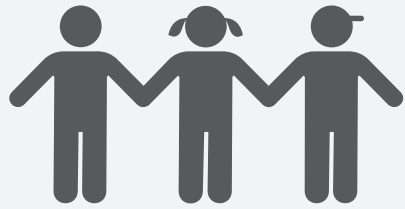


# Local Control and Accountability Plan

## SCHOOL STORY



**1,056** TK-12 STUDENTS



FULLY ACCREDITED BY  
Western Association of Schools and Colleges



**129** EMPLOYEES

### STUDENT GROUPS



**51%**  
Low Income



**6%**  
English Learners



**10%**  
Students with Disabilities



**54.5%**  
High Need

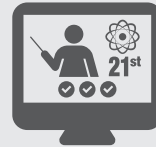
### Our Mission

To foster relationships and build a community of engaged learners through dynamic, high-quality instruction



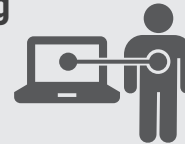
### Core Belief

A well-conceived virtual education program will boost student achievement, serve the unique needs of students and families, and offer a new model for effective public education in the 21st century



### Personalized Learning

Flexibility and choices offered to increase student interest and encourage mastery of skills, enabling them to become self-motivated, competent, lifelong learners



## BUDGET



General Fund Expenditures:  
**\$13,247,376**

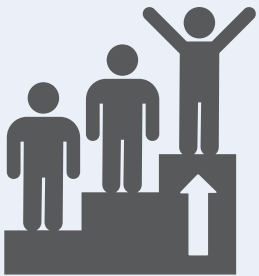
LCAP Expenditures:  
**\$1,101,504**

LCAP Expenditures for High Needs Students:  
**\$683,520**

Expenditures not included in the LCAP:  
**\$12,145,872**

Specified LCAP expenditures make up **8%** of General Fund expenditures.

## GOAL #1 INVESTING \$406,625



**Maximize Academic Achievement**

### HIGHLIGHTED OUTCOMES AND METRICS



IMPROVE ENGLISH LEARNER RECLASSIFICATION RATE **↑ 70%**



ENHANCE COLLEGE/CAREER READINESS **↑ 25%**



INCREASE % STUDENTS AT OR ABOVE GRADE LEVEL ON STAR 360 MATH & READING **+ 10%**

### HIGHLIGHTED ACTIONS AND EXPENDITURES

1.4 - Implement a research-based English Language Development program	\$65,762
1.6 - Provide individualized coaching and professional development to all teachers	\$104,023
1.8 - Enhance Career & Technical Education program and expand course options to Middle School students	\$110,987

## GOAL #2 INVESTING \$68,668



**Ensure a Safe, Effective Learning Environment**

### HIGHLIGHTED OUTCOMES AND METRICS



MAINTAIN HIGH LEVEL OF PARENT/FAMILY ENGAGEMENT **= 100%**



CONTINUE 0% SUSPENSION AND EXPULSION RATES **= 0%**



PROLONG FAVORABLE SCHOOL CLIMATE ASSESSMENTS **= 100%**

### HIGHLIGHTED ACTIONS AND EXPENDITURES

2.2 - Provide interpreter and translation services for families in need	\$2,337
2.3 - Enhance parent and student engagement through improved communication and additional extracurricular opportunities.	\$25,988
2.5 - Implement and extend the targeted social-emotional learning program	\$40,343

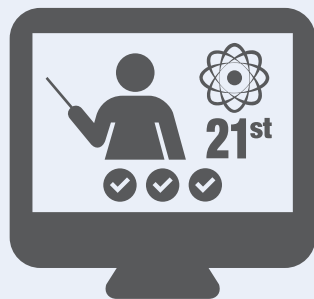


# Local Control and Accountability Plan

GOAL

#3

INVESTING  
\$395,165



## Provide High-Quality Education

### HIGHLIGHTED EXPECTED OUTCOMES & METRICS



CONTINUE STUDENT  
ACCESS TO A BROAD  
COURSE OF STUDY

= 100%



SUSTAIN STUDENT  
ACCESS TO TARGETED  
SUPPORT PROGRAMS

= 100%



MAINTAIN FACULTY OF  
FULLY CREDENTIALLED  
TEACHERS

= 100%

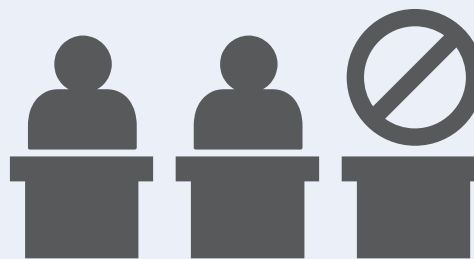
### HIGHLIGHTED ACTIONS AND EXPENDITURES

3.1 - Provide an Internet subsidy for qualified students	\$130,005
3.3 - Employ data analysis staff to monitor student progress and attendance	\$45,967
3.4 - Utilize curriculum specialists to support student learning	\$44,605

GOAL

#4

INVESTING  
\$76,323



## Decrease Chronic Absenteeism

### HIGHLIGHTED EXPECTED OUTCOMES & METRICS



REDUCE CHRONIC  
ABSENTEEISM RATE

↓ 10%



INCREASE SCHOOL  
ATTENDANCE RATE

↑ 98%



DECREASE HIGH SCHOOL  
DROPOUT RATE

↓ 15%

### HIGHLIGHTED ACTIONS AND EXPENDITURES

4.1 - Implement the Compass Program to support struggling students and lead them to success and engagement	\$76,323
4.2 - Enact various attendance interventions to encourage student engagement and success	N/C

GOAL

#5

INVESTING  
\$154,723



## Increase Graduation Rate

### HIGHLIGHTED EXPECTED OUTCOMES & METRICS



IMPROVE GRADUATION  
RATE FOR ALL SUBGROUPS

↑ 75%



INCREASE HIGH SCHOOL  
COURSE PASS RATE

↑ 98%



RAISE % STUDENTS WHO  
ARE CREDIT SUFFICIENT

↑ 75%

### HIGHLIGHTED ACTIONS AND EXPENDITURES

5.1 - Provide Graduation Coaches to support high school team & students	\$29,453
5.5 - Increase high school math and English course offerings	\$29,428
5.6 - Enhance support for students graduating with A-G eligibility	\$89,900

