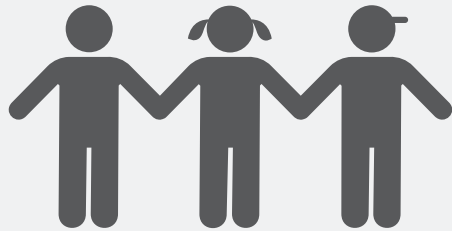


Local Control and Accountability Plan



DISTRICT STORY



655 Preschool-Adult STUDENTS



5 SCHOOLS



2 DISTINGUISHED Schools



106 EMPLOYEES

STUDENT GROUPS



61%
Low Income



2%
English Learners



<1%
Foster Youth



61%
Unduplicated Students

Student Wellbeing

To support student wellbeing, SVUSD will begin implementation of a 3-year plan for providing Social Emotional Learning and Positive Behavior Intervention & Supports.



Collaborative Environment



We are committed to fostering a collaborative environment and working together with stakeholders & the community.

Alternative Pathways

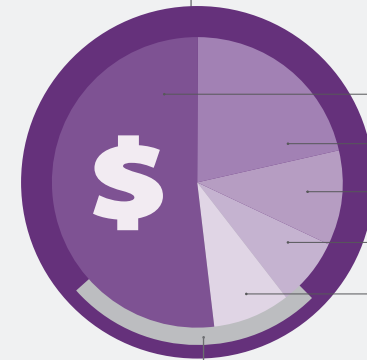
SVUSD offers an adult education pathways program as well as a secondary independent study program.



BUDGET

General Fund Expenditures:
\$10,130,299

General Fund expenditures are broken down into the following categories:



LCAP Expenditures:
\$2,672,780

Specified LCAP expenditures make up **26%** of General Fund expenditures.

GOAL

#1

INVESTING \$993,170



Every Student Will Demonstrate Improved Academic Achievement

HIGHLIGHTED OUTCOMES & METRICS

	INCREASE STUDENTS MEETING OR EXCEEDING STANDARD IN MATH & ELA	60% ELA 60% Math
	INCREASE STUDENTS COMPLETING A-G REQUIREMENTS	80%
	INCREASE STUDENTS COMPLETING CTE PATHWAYS	80%
	INCREASE ENGLISH LEARNER RECLASSIFICATION RATE	100%
	INCREASE STUDENTS SCORING 3 OR HIGHER ON AP EXAM	80%

HIGHLIGHTED ACTIONS, EXPENDITURES & TARGETS

1.1 - Provide professional development, teacher release time, and quarterly student progress monitoring conferences.	\$22,633	All Students
1.2 - Initiate year 1 of a 3-year plan to fully implement Positive Behavior Intervention and Supports to support the social emotional well-being and academic achievement of all students.	\$131,473	LI, EL, FY, SWD
1.6 - Offer a Summer School program to address learning loss, support credit recovery, and provide enrichment opportunities.	\$120,712	All Students
1.7 - Support the CTE program with professional development, support for students with summer projects, and field trips.	\$245,530	All Students

Local Control and Accountability Plan



GOAL #2 INVESTING \$475,505

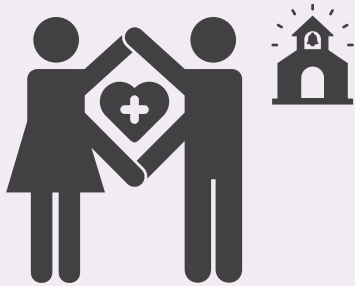


Increase Parent & Student Engagement

HIGHLIGHTED OUTCOMES & METRICS		
	INCREASE PARTICIPATION RATES FOR TITLE VI FUNDED EVENTS & ACTIVITIES	↑ 30%
	MAINTAIN TB TESTING FOR ALL PARENT, FAMILY & COMMUNITY VOLUNTEERS	= 100%
	REDUCE RATE OF CHRONIC ABSENTEEISM	↓ 5%
	INCREASE ATTENDANCE RATE	↑ 98%
	INCREASE GRADUATION RATE	↑ 99%

HIGHLIGHTED ACTIONS, EXPENDITURES & TARGETS		
2.2 - Continue to provide TB testing for parent, family, and community volunteers.	\$1,600	
2.4 - Upgrade marquee to help share information and announcements with parents and the community.	\$36,000	
2.5 - Designate extra hours for events and parent/community engagement opportunities.	\$3,000	
2.6 - Continue to fund and offer an Adult Education program.	\$44,468	
2.7 - Provide staffing and resources for the implementation of Positive Behavior Intervention and Supports.	\$46,587	
2.8 - Continue to provide transportation to and from school.	\$338,831	

GOAL #3 INVESTING \$997,044



Sustain a Positive School Climate

HIGHLIGHTED OUTCOMES & METRICS		
	MAINTAIN CREDENTIALLED AND APPROPRIATELY ASSIGNED TEACHERS	= 100%
	CONTINUE TO PROVIDE SCIENCE ENRICHMENT AT ELEMENTARY SCHOOLS	= 100%
	PROVIDE INTEGRATED ENGLISH LANGUAGE DEVELOPMENT FOR ENGLISH LEARNERS	= 100% <small>ELs have access to integrated ELD</small>
	MAINTAIN ACCESS TO STANDARDS-ALIGNED INSTRUCTIONAL MATERIALS	= 100%
	MAINTAIN ALL FACILITIES IN GOOD REPAIR	= 100%

HIGHLIGHTED ACTIONS, EXPENDITURES & TARGETS		
3.2 - Paraprofessionals will support teachers with teaching and learning and will provide caring support for students.	\$103,916	
3.4 - Upgrade HVAC and Filtration systems.	\$93,894	
3.5 - Continue to use GoGuardian Software to monitor student activity online and alert administration when intervention is required.	\$8,250	
3.8 - Fund travel for student athletes & teams.	\$55,000	
3.9 - Increase the usage of Aeries software and begin implementation of Aeries Analytics.	\$15,719	
3.10 - Extend the learning day and support with transportation, materials, and special events.	\$257,943	

