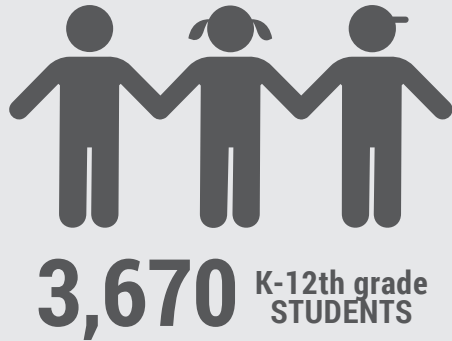


Learning Continuity & Attendance Plan Summary

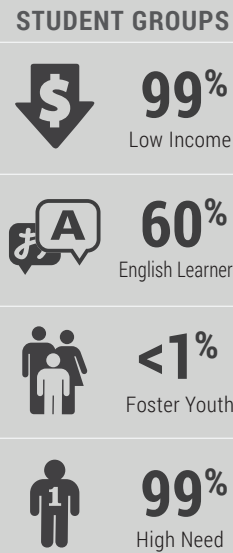
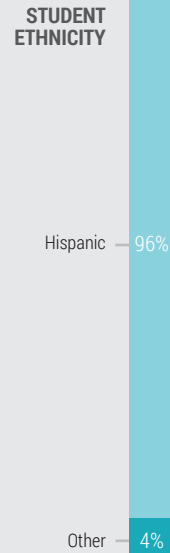
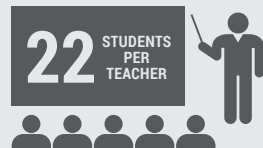
2020-21
Mendota USD
Page 1 of 2



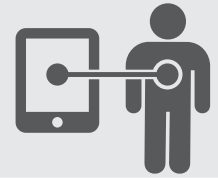
DISTRICT STORY



Elementary:	3	Continuation:	1
Junior High:	1	Day School:	1
High School:	1		



1:1 Device Ratio
Improvements in technology areas to ensure access for every student



District Priorities
Safety, academic achievement, student & stakeholder engagement

District Mission
We are committed to preparing & empowering our students to be competitive, productive, & compassionate members of society



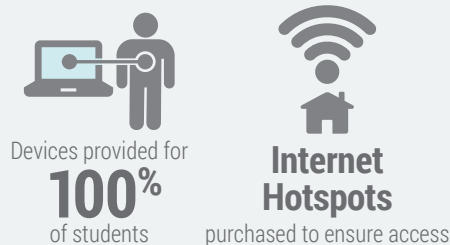
LEARNING CONTINUITY

Distance Learning Model



Mendota USD began the 2020-21 school year using a Distance Learning Model. Ensuring Learning Continuity during this time is a major point of focus.

Ensure Access for All Students



Keep Students Engaged

Teachers & staff conduct **Regular Outreach** to disengaged students

All students participate in **Daily Live Interactions**

Maintain Quality Education

Professional Development in Distance Learning Tools

Flexible Staff Roles help MUSD to navigate new challenges as they emerge



HYBRID & IN-PERSON LEARNING

Transition to In-Person Learning

The transition from Distance Learning to In-Person Learning may involve a transitional Hybrid phase.



TRANSITIONAL HYBRID MODEL

Assigned cohorts will attend in-person on specific days, limiting the number of students on campus at any given time.

When allowable under state and local health orders, the District is prepared to offer in-person instruction. To ensure that in-person learning is as safe as possible, **extensive safety measures have been implemented.**

SAFETY MEASURES



Limited Campus Access

Campus access is limited to essential visitors and designated entrances and exits are set up.



Social Distancing

Social distancing is practiced and large gatherings avoided while on campus.



Frequent Cleaning

Surfaces and facilities in the school are cleaned and disinfected frequently.



Health Screening

Temperature check kiosks are set up to allow for effective and efficient screening of students & staff.



Sanitation Stations

Additional hand washing and sanitation stations have been installed.



Face Masks

Face coverings are required in settings where social distancing cannot be maintained.

STUDENT SUPPORT

MENTAL HEALTH & SOCIAL & EMOTIONAL WELLBEING



Support & Services

Students and staff have access to established community resources, as well as district provided behaviorists and school psychologists.

Professional Development

Staff receive professional development on Mental Health including training on what signs to look for with struggling students.



SUPPORT FOR UNDUPLICATED STUDENTS



The **District Liaison** will conduct regular check-ins & provide necessary supports for foster youth & students experiencing homelessness.



One-on-one or small group academic support is available to English learners, homeless students, foster youth, & students with disabilities.



English Learners receive both integrated and designated ELD instruction daily.

HEALTH & NUTRITION



MEAL PICKUP
FROM SCHOOL SITES IS
AVAILABLE TO ALL STUDENTS



MEAL DELIVERY
IS AVAILABLE TO FAMILIES
THAT ARE UNABLE TO PICKUP



SAFETY PROTOCOLS
ARE FOLLOWED FOR ALL FOOD
PREPARATION & DISTRIBUTION



ON-CAMPUS MEALS
WILL BE SERVED IN THE CLASSROOM

