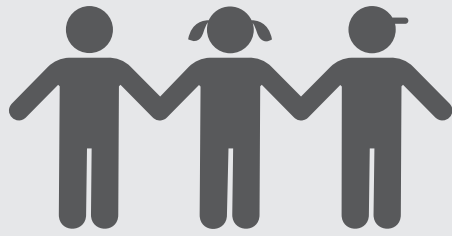


Learning Continuity & Attendance Plan Summary

2020-21
Oak Grove SD
Page 1 of 2



DISTRICT STORY



9,757 TK-8 STUDENTS

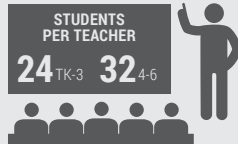


17 SCHOOLS

Elementary: 14 Intermediate: 3



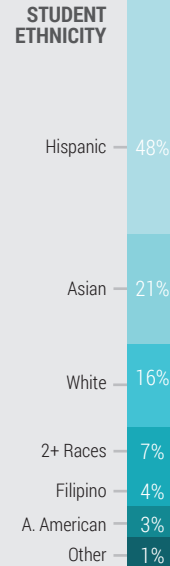
1,006 EMPLOYEES



STUDENTS PER TEACHER
24 TK-3 **32** 4-6



17 DISTINGUISHED Schools



STUDENT GROUPS



Core Values

Student Learning, Respect, Integrity, Inclusivity, Positive Interdependence, and Quality Performance.



District Vision

Academic, Social, & Emotional Student Success; Making a Difference.

District Mission

Ensure that every child's potential is achieved.



LEARNING CONTINUITY

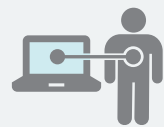
Distance Learning Model



Oak Grove SD began the 2020-21 school year using a Distance Learning Model. Ensuring Learning Continuity during this time is a major point of focus.



Ensure Access for All Students



7,493

Chromebooks shared



700

Hotspots distributed



Keep Students Engaged



Teachers maintain a **Weekly Engagement Record** for each student



Re-engagement Protocol is used for disengaged students



Maintain Quality Education



Professional Development in Distance Learning Tools



All students participate in **Daily Live Interactions**

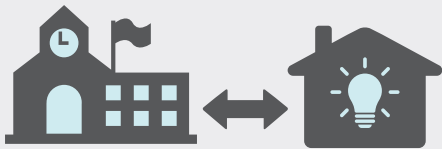




HYBRID & IN-PERSON LEARNING

Transition to In-Person Learning

The transition from Distance Learning to In-Person Learning may involve a transitional Hybrid phase.



TRANSITIONAL HYBRID MODEL

Assigned cohorts will attend in-person on specific days, limiting the number of students on campus at any given time.

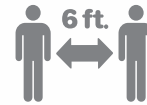
When allowable under state and local health orders, the District is prepared to offer in-person instruction. To ensure that in-person learning is as safe as possible, **extensive safety measures have been implemented.**

SAFETY MEASURES



Limited Campus Access

Campus access will be limited to essential visitors who will be screened upon entering the campus.



Social Distancing

Social distancing will be practiced and large gatherings avoided while on campus.



Frequent Cleaning

Surfaces and facilities in the school will be cleaned and disinfected frequently.



Employee Training

Health clerks & nurses will receive extra training in how to evaluate and respond to possible COVID cases.



Hand Washing

OGSD will ensure that hand sanitizer is available at or near all workstations.



Face Masks

Face coverings are required for all students and staff.

STUDENT SUPPORT

MENTAL HEALTH & SOCIAL & EMOTIONAL WELLBEING



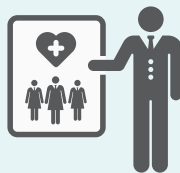
Support Providers

Every school site has access to a community liaison, a school psychologist, a school social worker, and an MFT intern.



Professional Development

Professional development seminars were provided on suicide prevention, PBIS, deescalation, anger & emotions management, & equity.



SUPPORT FOR UNDUPLICATED STUDENTS



A Homeless & Foster Youth Liaison

makes check-in regularly with Foster Youth & Pupils Experiencing Homelessness.



RSP Case Managers will help ensure that students with exceptional needs receive necessary supports & accommodations during distance learning.



English Learners will receive both integrated and designated ELD instruction daily.

HEALTH & NUTRITION



MEAL PICKUP

IS AVAILABLE FROM 9 SCHOOL SITES, MONDAYS, WEDNESDAYS & FRIDAYS



DRIVE THRU MEAL SERVICE

IS IN PLACE, ALLOWING SAFE DISTANCE BETWEEN STAFF AND CUSTOMERS



SAFETY PROTOCOLS

ARE FOLLOWED FOR ALL FOOD PREPARATION & DISTRIBUTION



AVAILABLE MEAL SERVICES

ARE ADVERTISED TO THE COMMUNITY THROUGH VARIOUS MEANS

