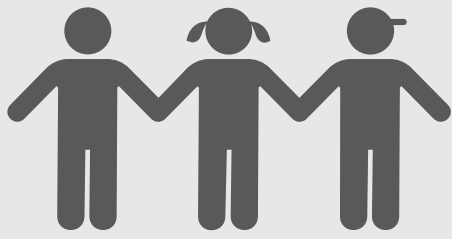


DISTRICT STORY



26,304 TK-12 STUDENTS



35 SCHOOLS

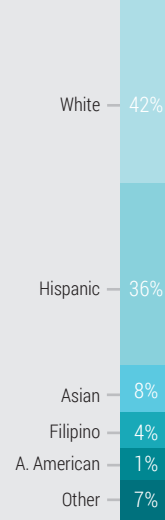
High School: 4
Junior High: 4
Elementary: 23

Alternative Ed: 1
Virtual Learning: 1
Special Ed: 1
Early Childhood: 1



29
DISTINGUISHED
SCHOOLS

STUDENT ETHNICITY



STUDENT GROUPS

30%
Low Income

18%
English Learners

<1%
Foster Youth

SV Innovates

Intentional lesson design, engaging strategies, developing innovative practices



SVUSD LCAP GOALS

- 1 Each school site will develop and maintain positive parent, student, and community involvement and engagement to promote and support student success.
- 2 All students will demonstrate mastery of grade-level content & graduate prepared to be successful in college, career, & beyond.
- 3 All students will have appropriately assigned teachers with access to curriculum-aligned instructional materials where state academic standards are implemented in safe, clean, & functional school facilities.

LEARNING CONTINUITY

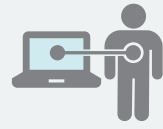
Distance Learning Model



Saddleback Valley USD began the 2020-21 school year using a Distance Learning Model. Ensuring Learning Continuity during this time is a major point of focus.



Ensure Access for All Students



Devices provided for **100%** of students



550 Hotspots purchased



Keep Students Engaged



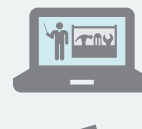
Reengagement Strategies have been developed to reengage disengaged students



All students participate in **Daily Live Interactions**



Maintain Quality Education



Professional Development in Distance Learning Tools

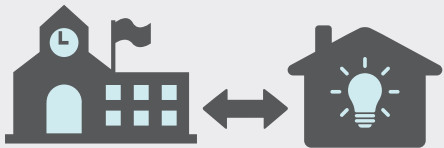


Flexible Staff Roles help SVUSD to navigate new challenges as they emerge

HYBRID & IN-PERSON LEARNING

Transition to In-Person Learning

The transition from Distance Learning to In-Person Learning may involve a Hybrid phase.



TRANSITIONAL HYBRID MODEL

Assigned cohorts will attend in-person on specific days, limiting the number of students on campus at any given time.

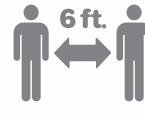
When allowable under state and local health orders, the District is prepared to offer in-person instruction. To ensure that in-person learning is as safe as possible, **extensive safety measures have been implemented.**

SAFETY MEASURES



Limited Campus Access

Schools will restrict non-essential visitors, volunteers, and activities involving other groups.



Social Distancing

Social distancing will be practiced and large gatherings avoided while on campus.



Frequent Cleaning

Surfaces and facilities in the school will be cleaned and disinfected frequently.



Desk Dividers

Plexiglass dividers are used to separate students in the classroom, as well as in the front offices.



Scenario Chart

A detailed scenario chart was developed to ensure a clear process for dealing with any suspected cases.



Face Masks

Face masks are required at all times.

STUDENT SUPPORT

MENTAL HEALTH & SOCIAL & EMOTIONAL WELLBEING



Monitoring Student Wellbeing

The Panorama Education platform gives teachers access to SEL data, allowing them to monitor student wellbeing.

Community Support for Parents

The District partners with community agencies to increase parent education & support opportunities.



SUPPORT FOR UNDUPLICATED STUDENTS



Individualized Education Programs will continue to be used for Special Education students to support progress towards student goals.



Foster Youth & Pupils Experiencing Homelessness are monitored weekly and staff have been trained in re-engagement strategies.



English Learners will receive both integrated and designated ELD instruction daily.

HEALTH & NUTRITION



DAILY MEAL PICKUP

IS AVAILABLE TO ALL STUDENTS AT 7 LOCATIONS AROUND THE DISTRICT



HYBRID LEARNING MEALS

WILL BE PROVIDED AT EACH SCHOOL SITE IN THE DISTRICT.



SAFETY PROTOCOLS

ARE FOLLOWED FOR ALL FOOD PREPARATION & DISTRIBUTION

