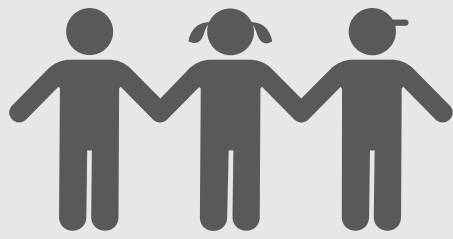
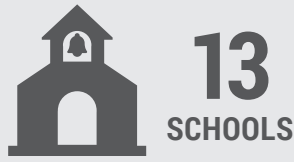


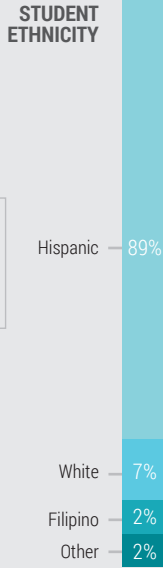
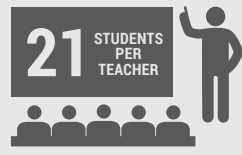
DISTRICT STORY



16,257 7TH-ADULT STUDENTS



High School: 5	Alternative Ed: 1
Middle School: 4	Adult: 1
Ind. Study: 1	ROP: 1



STUDENT GROUPS



Parent Involvement Policy

Implement stronger student, parent & community communication & resources to provide educational enrichment and support.



Data-based Professional Development

Student assessments are used to guide areas of focus for professional development.

District Mission

Develop educated learners to the highest standards, preparing them to achieve their life's aspirations and to be productive citizens in a global society.



LEARNING CONTINUITY

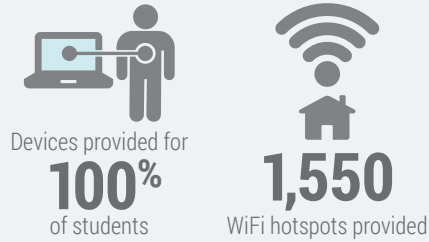
Distance Learning Model



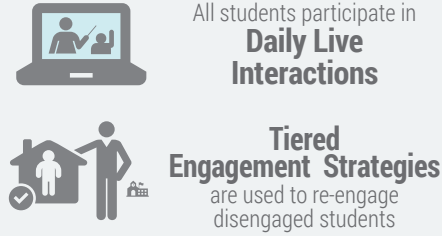
Salinas UHSD began the 2020-21 school year using a Distance Learning Model. Ensuring Learning Continuity during this time is a major point of focus.



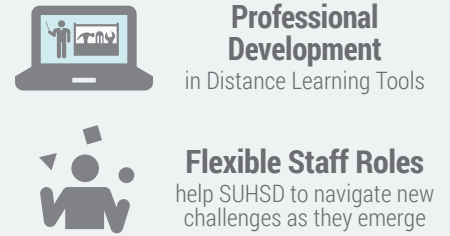
Ensure Access for All Students



Keep Students Engaged



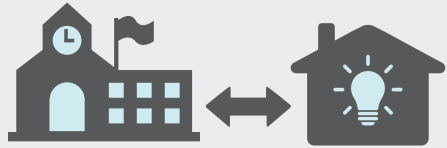
Maintain Quality Education



HYBRID & IN-PERSON LEARNING

Transition to In-Person Learning

The transition from Distance Learning to In-Person Learning may involve a transitional Hybrid phase.



TRANSITIONAL HYBRID MODEL

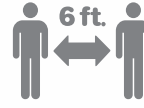
Assigned cohorts will attend in-person on specific days, limiting the number of students on campus at any given time.

When allowable under state and local health orders, the District is prepared to offer in-person instruction. To ensure that in-person learning is as safe as possible, **extensive safety measures have been implemented.**

SAFETY MEASURES



Limited Campus Access
Campus access will be limited & parents will be encouraged to stay in cars when picking up/dropping off students.



Social Distancing
Social distancing will be practiced and large gatherings avoided while on campus.



Frequent Cleaning
Surfaces and facilities in the school will be cleaned and disinfected frequently.



Improved Ventilation
All Heating, Ventilation and Air Conditioning (HVAC) filters have been replaced and HVAC economizers installed.



Sanitation Stations
Handwashing stations with microfiber wipes set up at school sites.



Face Masks
Face coverings are required in settings where social distancing cannot be maintained.

STUDENT SUPPORT

MENTAL HEALTH & SOCIAL & EMOTIONAL WELLBEING

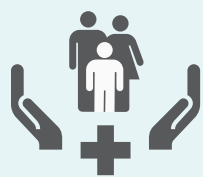


Crisis Response Procedures

Training is provided in crisis response procedures, including suicide risk assessment and child abuse reporting.

Community Partnerships

SUHSD partners with local organizations to provide additional mental health supports for those that need them.



SUPPORT FOR UNDUPLICATED STUDENTS



A District Liaison will monitor the academic progress and attendance of Foster Youth & Pupils Experiencing Homelessness.



Students with Disabilities will receive individualized support to help them achieve their emotional, social and educational goals.



English Learners will receive both integrated and designated ELD instruction daily.

HEALTH & NUTRITION



MEAL PICKUP
FROM SCHOOL SITES IS AVAILABLE TO ALL STUDENTS



MEAL DELIVERY
MAY BE AVAILABLE TO FAMILIES THAT ARE UNABLE TO PICKUP



SAFETY PROTOCOLS
ARE FOLLOWED FOR ALL FOOD PREPARATION & DISTRIBUTION



ON-CAMPUS MEALS
WILL BE SERVED SO THAT MIXING OF LARGE GROUPS IS LIMITED

